



---

## SCRUTINY BOARD (CHILDREN AND FAMILIES)

---

Meeting to be held in Civic Hall, Leeds, LS1 1UR on  
Thursday, 25th April, 2013 at 9.45 am

*(A pre-meeting will take place for ALL Members of the Board at 9.15 a.m.)*

---

### MEMBERSHIP

#### Councillors

- J Chapman (Chair) - Weetwood;
- B Gettings - Morley North;
- C Gruen - Bramley and Stanningley;
- A Hussain - Gipton and Harehills;
- A Khan - Burmantofts and Richmond Hill;
- A Lamb - Wetherby;
- P Latty - Guiseley and Rawdon;
- M Rafique - Chapel Allerton;
- K Renshaw - Ardsley and Robin Hood;
- A Sobel - Moortown;
- B Urry - Roundhay;

#### Co-opted Members (Voting)

- Mr E A Britten - Church Representative (Catholic)
- Vacancy - Church Representative (Church of England)
- Ms A Craven - Parent Governor Representative (Primary)
- Ms J Ward - Parent Governor Representative (Secondary)
- Vacancy - Parent Governor Representative (Special)

#### Co-opted Members (Non-Voting)

- Ms C Foote - Teacher Representative
- Ms C Raftery - Teacher Representative
- Mrs S Hutchinson - Early Years Representative
- Ms T Kayani - Leeds Youth Work Partnership Representative
- Ms J Morris-Boam - Young Lives Leeds

---

**Agenda compiled by:**  
**Guy Close**  
**Governance Services**  
**Tel: 24 74356**

**Principal Scrutiny Advisor:**  
**Sandra Newbould**  
**Tel: 24 74792**

# A G E N D A

Item No	Ward/Equal Opportunities	Item Not Open		Page No
1			<p><b>APPEALS AGAINST REFUSAL OF INSPECTION OF DOCUMENTS</b></p> <p>To consider any appeals in accordance with Procedure Rule 25* of the Access to Information Procedure Rules (in the event of an Appeal the press and public will be excluded).</p> <p>(* In accordance with Procedure Rule 25, notice of an appeal must be received in writing by the Head of Governance Services at least 24 hours before the meeting).</p>	
2			<p><b>EXEMPT INFORMATION - POSSIBLE EXCLUSION OF THE PRESS AND PUBLIC</b></p> <p>1 To highlight reports or appendices which officers have identified as containing exempt information, and where officers consider that the public interest in maintaining the exemption outweighs the public interest in disclosing the information, for the reasons outlined in the report.</p> <p>2 To consider whether or not to accept the officers recommendation in respect of the above information.</p> <p>3 If so, to formally pass the following resolution:-</p> <p><b>RESOLVED –</b> That the press and public be excluded from the meeting during consideration of the following parts of the agenda designated as containing exempt information on the grounds that it is likely, in view of the nature of the business to be transacted or the nature of the proceedings, that if members of the press and public were present there would be disclosure to them of exempt information, as follows:</p> <p><b>No exempt items have been identified on this agenda.</b></p>	

Item No	Ward/Equal Opportunities	Item Not Open		Page No
3			<p><b>LATE ITEMS</b></p> <p>To identify items which have been admitted to the agenda by the Chair for consideration.</p> <p>(The special circumstances shall be specified in the minutes.)</p>	
4			<p><b>DECLARATION OF DISCLOSABLE PECUNIARY INTERESTS</b></p> <p>To disclose or draw attention to any disclosable pecuniary interests for the purposes of Section 31 of the Localism Act 2011 and paragraphs 13-16 of the Members' Code of Conduct.</p>	
5			<p><b>APOLOGIES FOR ABSENCE AND NOTIFICATION OF SUBSTITUTES</b></p> <p>To receive any apologies for absence and notification of substitutes.</p>	
6			<p><b>MINUTES - 14TH MARCH 2013</b></p> <p>To confirm as a correct record, the minutes of the meeting held on 14<sup>th</sup> March 2013.</p>	1 - 4
7			<p><b>WELFARE REFORM AND CHILD POVERTY</b></p> <p>To receive and consider a report from the Chief Officer (Partnership Development and Business Support) which responds to questions raised by the Scrutiny Board (Children and Families) on 14 February 2013.</p>	5 - 18
8			<p><b>RECOMMENDATION TRACKING - COMBATING CHILD POVERTY AND RAISING ASPIRATIONS</b></p> <p>To receive and consider a report from the Head of Scrutiny and Member Development deferred from the 14 February 2013 meeting which sets out the progress made in responding to the recommendations arising from the previous Scrutiny review in Combating Child Poverty and Raising Aspirations published on 20 June 2012.</p>	19 - 48

Item No	Ward/Equal Opportunities	Item Not Open		Page No
9			<p><b>UPDATE ON RECENT INSPECTIONS</b></p> <p>To receive and consider a report from the Director of Children's Services in relation to the visits which has provided an examination of progress in Children's Services and feedback on progress and where further improvement is needed.</p>	49 - 56
10			<p><b>WORK SCHEDULE</b></p> <p>To receive and consider a report from the Head of Scrutiny and Member Development presenting the latest Executive Board minutes held on</p>	57 - 74
11			<p><b>DATE AND TIME OF NEXT MEETING</b></p> <p>Thursday, 25<sup>th</sup> April 2013 at 11.45 am (Call-in Meeting).</p>	

# Agenda Item 6

## SCRUTINY BOARD (CHILDREN AND FAMILIES)

THURSDAY, 14TH MARCH, 2013

**PRESENT:** Councillor J Chapman in the Chair

Councillors B Gettings, C Gruen,  
A Hussain, A Khan, A Lamb, P Latty,  
K Renshaw, A Sobel, B Urry

### **CO-OPTED MEMBERS (VOTING):**

Mr E A Britten – Church Representative (Catholic)

Ms J Ward – Parent Governor Representative (Secondary)

### **CO-OPTED MEMBERS (NON-VOTING):**

Ms C Raftery – Teacher Representative

Mrs S Hutchinson – Early Years Representative

Ms T Kayani – Leeds Youth Work Partnership Representative

Ms J Morris-Boam – Young Lives Leeds

#### **114 Chair's Opening Remarks**

The Chair welcomed all in attendance to the March meeting of Scrutiny Board (Children and Families).

#### **115 Late Items**

In accordance with her powers under Section 100B(4)(b) of the Local Government Act 1972, the Chair agreed to accept the following late information:

- 2012/13 Quarter 3 Performance Report – replacement wording for paragraph 3.1 relevant to quarter 3 (Minute No. 120 refers)
- Scrutiny Inquiry into Increasing the Number of Young People in Employment, Education or Training (Minute No. 122 refers)

The above documents were not available at the time of agenda despatch, but were subsequently made available on the Council's website.

#### **116 Declaration of Disclosable Pecuniary Interests**

Councillor A Lamb declared a non-pecuniary interest in relation to agenda item 7, Scrutiny Inquiry – Strategic Partnership Boards, in his capacity as a Member of the Children's Trust Board. (Minute No. 119 refers)

#### **117 Apologies for Absence and Notification of Substitutes**

Apologies for absence were submitted by Councillors M Rafique and Co-opted Members, Ms A Craven and Ms C Foote.

## 118 Minutes - 14th February 2013

**RESOLVED** – That the minutes of the meeting held on 14<sup>th</sup> February 2013 be approved as a correct record.

## 119 Scrutiny Inquiry - Strategic Partnership Boards

The Head of Scrutiny and Member Development submitted a report which outlined the strengths and areas for development in relation to the Children's Trust Board.

The following information was appended to the report:

- Current membership of the Children's Trust Board
- Children's Trust Governance Structure
- Child poverty – an update on progress and national consultation.

The following Executive Member and officers attended the meeting:

- Councillor Blake, Executive Member (Children's Services)
- Nigel Richardson, Director of Children's Services
- Sue Rumbold, Chief Officer (Partnership Development and Business Support)
- Jane Mischenko, NHS Airedale, Bradford and Leeds
- Dr Sharon Yelin, NHS Airedale, Bradford and Leeds
- Keith Gilert, Superintendent, West Yorkshire Police.

The key areas of discussion were:

- The role of the Children's Trust Board (CTB). The main area of development was around the involvement of young people.
- The benefits of partnership working.
- The role of clusters, particularly in relation to increasing the number of young people in employment, education or training.
- Investment in the following key areas:
  - The voice and influence of looked after children
  - Restorative practice
  - Outcome based accountability.
- Development of governance arrangements for clusters.
- Acknowledgement of the work undertaken by the voluntary and 3<sup>rd</sup> sector, development of commissioning work, young carers and restorative practice.
- The potential implications of welfare reforms on families. Current focus on most vulnerable families and raising awareness.
- The complexity surrounding CTB governance arrangements.
- Concern about the absence of adult social services representation and early years representation on the CTB. Members were advised that representation on the CTB was currently being reviewed. It was agreed to report back any changes to the Scrutiny Board.

- Development of ward based data and information.
- Improvements needed in relation to measuring levels of child poverty.

**RESOLVED** – That the reports and appendices be noted.

(Councillor A Hussain joined the meeting at 10.02am during the consideration of this item.)

(Councillor A Khan withdrew from the meeting at 10.30am, during the consideration of this item.)

## **120 2012/13 Quarter 3 Performance Report**

The Assistant Chief Executive (Customer Access and Performance) / Director of Children's Services submitted a joint report which presented a summary of the 2012-13 quarter 3 performance data relevant to the Scrutiny Board (Children and Families).

The following information was appended to the report:

- Performance Reports for the 3 City Priority Plan Priorities
- Children's Services Directorate Priorities and Indicators
- Children and Young People's Plan dashboard.

The following officers attended the meeting:

- Nigel Richardson, Director of Children's Services
- Sue Rumbold, Chief Officer (Partnership Development and Business Support)
- Rebacca Hill, Performance Programme Manager.

The main areas of discussion were:

- Members requested a breakdown in relation to the number of young people involved in temporary employment, apprenticeships and other training programmes.
- Confirmation of improvements to children's homes provision.
- Further information requested in relation to Children's Services ofsted inspections/review.

It was agreed to report back the above requests for information to the April Scrutiny Board.

**RESOLVED** – That the contents of the report and appendices be noted.

(Councillor A Khan re-joined the meeting at 11.25am, during the consideration of this item.)

## **121 Response to Scrutiny Inquiry Report - Private Fostering**

The Director of Children's Services submitted a report in response to the Scrutiny Board's inquiry report on private fostering.

The following officers attended the meeting:

- Nigel Richardson, Director of Children's Services
- Steve Walker, Deputy Director, Safeguarding, Specialist and Targeted Services
- Bryan Gocke, Leeds Safeguarding Children's Board Manager.

**RESOLVED** – That the proposed responses outlined in the report be approved.

## **122 Scrutiny Inquiry into Increasing the Number of Young People in Employment, Education or Training**

The Head of Scrutiny and Member Development submitted a report which requested Members to consider and agree the Scrutiny Board's report following its inquiry into increasing the number of young people in employment, education or training.

The following officers attended the meeting:

- Nigel Richardson, Director of Children's Services
- Gary Milner, Lead – Skills for Learning and Life Service.

**RESOLVED** – That the Scrutiny Board's inquiry into increasing the number of young people in employment, education or training, be approved.

## **123 Work Schedule**

A report was submitted by the Head of Scrutiny and Member Development which detailed the Scrutiny Board's work schedule for the current municipal year.

Appended to the report for Members' information was the current version of the Board's work programme, together with the minutes of the Executive Board meeting held on 15<sup>th</sup> February 2013.

**RESOLVED** – That the work schedule be approved.

## **124 Date and Time of Next Meeting**

Thursday, 25<sup>th</sup> April 2013 at 9.45am with a Pre Meeting for Board Members at 9.15am.

(The meeting concluded at 11.58am.)



**Report of the Chief Officer Partnership Development Business Support, Childrens Services**

**Report to Scrutiny Board (Children and Families)**

**Date: 25 April 2013**

**Subject: Welfare Reform and Child Poverty**

Are specific electoral Wards affected? If relevant, name(s) of Ward(s):	<input type="checkbox"/> Yes	<input checked="" type="checkbox"/> No
Are there implications for equality and diversity and cohesion and integration?	<input type="checkbox"/> Yes	<input checked="" type="checkbox"/> No
Is the decision eligible for Call-In?	<input type="checkbox"/> Yes	<input checked="" type="checkbox"/> No
Does the report contain confidential or exempt information? If relevant, Access to Information Procedure Rule number: Appendix number:	<input type="checkbox"/> Yes	<input checked="" type="checkbox"/> No

**Summary of main issues**

At the February meeting of the Children and Families Scrutiny Board members agreed to defer until the April meeting the recommendation tracking report relating to the Child Poverty inquiry which made its final report in June 2012. This was done to allow for a discussion of the complex relationships between child poverty and welfare reform. During this discussion a number of issues arose which needed further clarification. This current report provides that further clarification.

**Recommendations**

1. Members to note and discuss the further information provided in the report.
2. Members to request the Director of Children's services to provide regular updates to this Scrutiny Board covering the impact of welfare reform on children, young people and their families.

## **1. Purpose of this report**

The report provides additional information in relation to the questions raised at the April meeting of the Board when it considered a number of issues relating to child poverty and welfare reform.

## **2 Background information**

2.1 Child poverty is a factor in many poor outcomes for children, young people, their families and communities, Strategies to reduce levels of child poverty and alleviate its affects are central to the Council's ambitions to narrow the gap between the outcomes enjoyed by the most and least advantaged children and young people in the city.

2.2 Levels of child poverty in Leeds, its impact and the success of strategies to tackle it are all affected by the welfare reform changes currently being introduced as part of a suite of national legislative changes.

2.3 At the February meeting of the Children and Families Scrutiny Board members agreed To defer until the April meeting the recommendation tracking report relating to the Child Poverty inquiry which received its final report in June 2012. This was done to allow for a discussion of the complex relationships between child poverty and welfare reform. During this discussion a number of issues arose which needed further clarification. This current report provides that further clarification.

## **3. Main issues requiring clarification**

*Recognising work done to communicate the impact of welfare reform through the work of the ALMOs, private landlords, children's services clusters and Children's Centres, members asked for clarity on whether any specific work has been done to support families on the families first programme and those families on the margins, to maintain family stability and prevent the need for entry into the social care system.*

3.1 The Leeds Families First programme has identified 879 families requiring support around anti social behaviour, youth offending, school attendance, progress to work and continuous employment. This work includes a round of joint face to face meetings between housing services, families first staff and clients involved in the families first programme to identify needs and demands in the light of some of the major welfare reform changes. The majority of those in the families first programme already have a key worker assigned to the family who has the responsibility for identifying multi agency support for the family.

3.2 The first round of face to face meetings focused on those impacted by the under occupancy dimension of welfare reform. A second round of meetings with this client group is currently being planned to be followed by face to face meetings with families first families impacted by the benefit cap changes.

3.3 The families first programme also has an intervention grant which can assist families with issues such as the purchase of school clothing. In addition with effect from April 1, as part of the national development of families first programmes, jobcentreplus staff will be seconded to the Leeds families first programme.

3.4 Cluster partnerships are helping families first programme staff to identify key workers and appropriate multi agency engagement for families in the programme. All 25 clusters across the city have a good knowledge of vulnerable families in their areas and have established processes for tracking and addressing the needs of the “top 100” families in their areas, ie, those with highest level of need. Cluster operations include a range of mechanisms for addressing different levels and kinds of needs.

3.5 For example, many clusters invest in family support work and are looking to sustain this commitment over the next 3 years. Some cluster teams are now skilled assessors of family need and used to working across agencies to put in place the right response. Where welfare reform compounds the pressures and stresses of family life, cluster base family support services, including targeted mental health interventions in schools will play a crucial role.

3.6 There are, of course, a vast array of programmes and initiatives supporting children, young people in their families in local areas across the city, and these are well supported by the Council and partners through arrangements such as cluster and local area working.

3.7 In the context of welfare reform it is important to note that invaluable though initiatives such as families first and cluster support mechanism are, they do tend to focus on those already defined as in some way vulnerable or at least close to the edge of vulnerability. Welfare reform potentially impacts on a much wider cohort of children, young people and families.

3.8 An indication of the potential scale of the issues is reflected in the fact that over 14,200 households with children will lose an average of £2.61 per week as a result of the replacement of Council Tax Benefit with localised Council Tax support schemes. With over 2,000 families with children impacted by the assessment of the number of bedrooms aspect of welfare reform.

*Members sought clarity on how resources are allocated to target areas of high deprivation and/or high levels of child poverty.*

#### **a) Children’s Centres in clusters**

3.9 There are Children’s Centres and Early Start teams in each of the 25 clusters. Funding is allocated according to the number of children in an area and the deprivation levels in that area. Every child under 5 is taken into account and funding is calculated based on where a child lives in the city. Health visitors are also based on levels of deprivation. Social worker allocations are based on levels of deprivation and the number of safeguarding incidents reported to social care. The Council currently subsidises childcare in the 30% most deprived areas of Leeds. Between 4100-4200 Early Years places (free or heavily subsidised) are allocated each year based on levels of deprivation as measured by free school meal eligibility data.

#### **b) Pupil Premium**

3.10 In addition to local funding in Leeds, the nationally managed Pupil Premium is providing Leeds Schools (including Academies) with approx. £28,000,000 in 2013/14

based on £900 per pupil eligible for FSM over the past 6 years or Children Looked After for over 6 months.

### **c) Clusters**

3.11 Schools Forum have agreed to contribute £5.2m per year for the next 3 years to help fund cluster work. Cluster funding targets areas of high need and deprivation using the formula and funding allocations shown in the table in appendix 1. The 25 clusters use this and other funding streams to help to deliver the Children and Young People's Plan at local level and to target vulnerable children, young people and families.

3.12 The role of clusters is growing all the time. They are currently developing their capacity to provide early intervention and prevention services. In particular targeted services leaders are developing the top 100 methodology to identify children, young people and families who need additional support in each of the 25 clusters across the city. This includes a coordinated support package and the identification of an appropriate lead agency and lead practitioner for each family drawing on the resources of the major partners in the cluster, eg. the children's social work service, schools, governors, police, youth and youth offending services, children's centres, health services, housing services, third sector providers and services, local elected members.

3.13 All clusters have multi agency guidance and support groups that focus on identifying the best response for those requiring additional support, and making appropriate decisions about which cases require specialist social work interventions and which can be supported from the wider menu of cluster intervention services. They aim to deliver the relevant services in a way which enables children to remain safely within their family and community.

3.14 Early Start teams are now an established part of cluster working. They have brought Health Visitor and Children's Centre staff together to provide a seamless early pathway for families from pre birth to 5 years of age.

3.15 This work includes the Healthy Child Pathway where every child (including pre birth) has a series of contacts to make sure that developmental milestones are being met. It is though a universal offer for all families that additional needs will be identified.

3.16 Cluster Managers and Targeted Services Leaders in each cluster coordinate the over view of local early intervention services. The Duty and Advice Team is the 'Front Door' service to ensure that when another professional or practitioner or a member of the public has concerns that a child or young person may be at risk of harm or in need, that an effective and purposeful response is provided. Team members decide on what response is required and direct the issue to the relevant specialist social work service or to another cluster based support service.

3.17 Underpinning all early intervention and prevention activity in Leeds is the requirement to undertake Common Assessments, to develop shared plans to support vulnerable children and families, focussing on working with them to improve their outcomes.

3.18 However, in line with the point made in paragraphs 3.6-3.8 neither broad universal services nor more precisely targeted services focusing on a relatively small number of vulnerable families, will necessarily be the answer to questions pose by welfare reform.

## The Youth Service

3.19 Executive Board have recently agreed proposals to restructure and target youth service resources. The proposals involve a new model for youth services across Leeds. They are mentioned here because they contain an element of targeting resources to areas of need: a targeted guarantee: *enabling young people who are identified as vulnerable or who have specific needs in accessing the range of opportunities available, to do so*; a specialist guarantee: *ensuring that young people with specialist needs (those with the most complex challenges, requiring workers with very specialised skills) are able to be on a path to success and contribute positively to society through the provision of restorative services for them, their families and communities.*

3.20 The youth review will enable £2.54 million to be spent on targeted youth work across local areas, with the allocation determined in liaison between the Executive Member for Children's Services and Area Committees. At the same time it will allow a new allocation to the overall Area Committee budget, ringfenced for youth activities, of £250k in 2013/14 and £500k in 2014/15. The implementation of these changes will also support the approved budget proposals which target a net £0.4m savings in 2013/14 and a further £0.7m of savings in 2014/15 from the Youth Review.

*Recognising efforts to provide information and advice members sought clarity around the question of whether any work has been done to assess the risks (or put any measures in place) for the localities- 5 wards- with over 40% of children living in poverty, and if other forward planning has been done to manage the knock on effects that welfare reform and universal credit would have in these areas to minimise negative impacts on children.*

3.21 Through the work of the Welfare Reform Strategy group and its various sub groups, led by the Chief Revenues and Benefits Officer, information and advice has been made available to clients and front line staff. This is based on a sound statistical understanding of which families are affected by which welfare changes. Detailed information is available at ward and sub ward levels.

3.22 The continuum of need arising from welfare reform changes set out below is simplistic but it illustrates the issues facing the Council and the very difficult questions posed by this element of the Board's query.

<p><b>Low need</b> met from within existing resources</p>	<p>Need for additional support (relatively low level) met from within existing resources</p>	<p>Possible complex needs arising as welfare reform changes begin to affect family stability</p>	<p><b>High need</b> currently addressed through specialist support and intervention services dealing with the most</p>
---	--	--	--

(eg. Clients requiring basic information and advice on welfare reform changes)	(eg. Clients requiring some support with changes, & who need signposting to support from existing network of cluster and local area services)		vulnerable, including those in or on the edge of the social care system.  Significant resource implications if demand for services rises.
--	---	--	---

3.23 Currently, in a children’s services context, little is known about the real, quantifiable medium and longer impacts of the welfare reform changes. How do the numbers of persons, families and children and young people affected by the various changes translate into different kinds of needs, and at what point might these needs arise, what are the early warning signs and the best way to respond to these?

3.24 We know that the primary reason for children becoming subject to Child Protection Plans or becoming ‘Looked-after’ by the local authority is ‘abuse or neglect’. These situations are generally linked to parental mental health issues, domestic violence and/or parental substance misuse. However, there is no necessary connection between the welfare reform changes, the knock on effects of these changes and vulnerability.

3.25 It is true that increased vulnerability is a possibility. Underlying risk factors in family stability include fractured parenting (children not living with both of their natural parents); parental unemployment/ household living on benefits; and, overcrowded/inappropriate living accommodation. There is a significant risk, associated with all of the changes to the benefit system that households will become more stretched leading to an increase in social care referrals and caseloads.

3.26 However, it is a risk that is difficult to quantify and manage. The two extremes of the continuum on the previous page are relatively easy to deal with. More complex is the area in between where there is the possibility that unmanageable financial difficulties may arise and in the medium or longer term may develop into or contribute to a more complex set of needs and issues.

3.27 Anecdotally clusters report increasing concerns about rising personal and family debt and the possible knock on effects. Effects which might be difficult to contain through the routine provision of information and advice. Schools will play an important role in detecting and registering early signs of concern in the wider cluster and local area networks.

**The way forward**

3.28 The Director of Children’s services to continue to work with other partners and services to assess and where possible meet immediate client needs. Working with Welfare Reform Strategy Group to ensure an appropriate multi agency response for clients experiencing concerns or difficulties.

3.29 Monitor referral patterns to pick up on any emerging trends in casework, and also monitor anecdotal and other informal reports of the emerging impact of welfare reforms on children, young people and their families.

3.30 Work with partners across the city to refresh the child poverty strategy to harness resources to tackle the emerging impacts of welfare reform on children, young people and their families.

3.31 Develop the role of cluster partnerships in identifying children, young people and families who are becoming more vulnerable as a result of welfare reform changes, and brokering appropriate responses.

3.32 Develop a clear set of performance measures to monitor the impact of welfare reforms on children, young people and their families.

3.33 The response of the Housing Investment Manager, City Development, in response the question was raised about *'the programme of building new council homes and how this would tie in with targeting families currently occupying council properties where there is under occupancy'*, is detailed in appendix A.

#### **4. Recommendations**

4.1 Members to note and discuss the further information provided in the report.

4.2 Members to request the Direct or Children's services to provide regular updates to this Scrutiny Board covering the impact of welfare reform on children, young people and their families.

This page is intentionally left blank



## Cluster Funding 2013/14

Nearest Fit Simple Formula 2013/14	2013/14
Pupils Yr R to Yr 11	14.01%
Lump Sum	8.41%
<b>TOTAL NUMBER BASED FUNDING</b>	<b>22.42%</b>
EAL in first 3yrs of education	2.80%
Pupils not achieving 78points in EYFSA or L3 or below in E and M at KS2	11.21%
FSM (anytime in last 6 yrs)	60.76%
IDACI index (yr R to Yr 11)	2.80%
<b>TOTAL TARGETED FUNDING</b>	<b>77.58%</b>

				<b>2013/14 Cluster Funding nearest fit model Recommended by Schools Forum</b>	
<b>CLUSTER</b>	Pupils Yr R to yr 11	Total Cluster Allocation 2013/14	Funding per pupil Yr R to Yr 11	%ge of Pupils eligible for FSM over past 6 years	%ge of pupils not achieving 78points in EYFSA or achieving L3 or below in E and M at KS2
Open XS	1,362	£118,132	£87	48.4%	37.9%
JESS (LS10SX, Beeston and Holbeck)	4,746	£410,832	£87	54.2%	42.4%
Inner East	5,830	£497,399	£85	54.6%	37.2%
Chess	2,555	£207,921	£81	43.0%	49.8%
Middleton, Upper Beeston and Cottingley	3,661	£280,251	£77	49.5%	37.0%
Bramley	3,295	£243,911	£74	48.7%	32.6%
Seacroft Manston	4,898	£359,309	£73	48.3%	28.7%
Inner Armley	3,007	£207,433	£69	43.9%	26.6%
Farnley	2,034	£123,482	£61	39.2%	21.9%
NEtWORKS	2,626	£156,930	£60	37.8%	21.5%
Temple Newsam / Halton	3,899	£211,581	£54	32.9%	25.8%
Inner NW Hub	4,002	£212,162	£53	31.6%	16.9%
ES North West	2,573	£131,257	£51	29.2%	21.0%
Rothwell	4,543	£213,813	£47	29.4%	14.0%
Brigshaw	2,840	£118,534	£42	22.8%	19.3%
Morley	5,593	£230,146	£41	23.5%	18.3%
Pudsey	6,867	£277,392	£40	21.7%	17.0%
N.E.X.T	4,881	£194,928	£40	21.1%	17.7%
Alwoodley	3,939	£148,666	£38	20.3%	12.4%
Ardsley and Tingley	2,999	£101,666	£34	18.8%	12.9%
EPOS	4,404	£143,320	£33	14.4%	10.4%
Horsforth	2,850	£85,315	£30	14.1%	8.7%
Garforth	3,264	£95,874	£29	13.2%	15.3%
Otley	2,592	£75,892	£29	12.9%	11.6%
Aireborough	5,777	£161,255	£28	13.2%	9.0%
	<b>95,037</b>	<b>£5,007,400</b>	<b>£52.69</b>	<b>31.0%</b>	<b>22.1%</b>

Cluster Funding reflects movement of Wigton Moor Primary from EPOS to Alwoodley  
Contextual data added regarding FSM and prior attainment across clusters

This page is intentionally left blank

## Appendix – Response of the Housing Investment Manager, City Development

The Board raised a question was raised about the programme of building new council homes and how this would tie in with targeting families currently occupying council properties where there is under occupancy.

The new build programme will produce 1 and 2 bed units targeted in part at older people under occupying large properties so that they can be released for allocation to families, thus helping us to make better use of the stock as a whole. Also by increasing the stock of smaller properties available to working age applicants we hope to meet some of the demand resulting from welfare reform in relation to under occupancy.

The location of the properties has yet to be finalised, however the Directors of Development and for Environment and Neighbourhoods presented a report to the Executive Board on the 9<sup>th</sup> of January 2013 which provided a shortlist of sites informed by demand data for smaller properties.

Development of New Council Housing site shortlist as presented to Executive Board:

Site	Ward	Address	Description	size (ha)	Est no. of units	Comments and Constraints
<b>West North West</b>						
Land between 5 and 47 Broadlea Street, Bramley	Bramley and Stanningley	Broadlea Street, Bramley, LS13 2SD	Cleared site	0.72	up to 20	* Cleared site of 20 former houses * Site slightly sloping
Land between nos 66 and 76 Broadlea Street	Bramley and Stanningley	Broadlea Street, Bramley, LS13 2SD	cleared site	0.02	2 to 4	* Cleared site of 4 former flats

Mistress Lane	Armley	Mistress Lane, Armley, LS12 2LJ	Cleared housing site at the heart of the West Leeds Gateway.	1.23	60	<ul style="list-style-type: none"> <li>* site has Outline Planning approval for 83 flats</li> <li>* site could be developed as part of Brownfield Land Programme</li> <li>* Provides a development challenge due to its topography</li> <li>* Part of site N1 green space</li> <li>*Services cross the site to serve the remaining tower blocks</li> <li>*size of site gives scope to develop jointly with an RP to provide a mixed site of Council homes and homes for rent by RP. In principle discussions taken place with RP with a funding allocation on a non site specific basis for 30</li> </ul>
Harley Green	Pudsey	Harley Green, Swinnow, LS13 4PX	Former garage site	0.17	3 to 4	<ul style="list-style-type: none"> <li>* Sloping site</li> <li>*Some potential access issues</li> </ul>
<b>South</b>						
Parkwood Road	Beeston and Holbeck	Parkwood Road, Beeston, LS11 5QY	Former maisonette site	0.43	12	<ul style="list-style-type: none"> <li>* Possibility of localised ground contamination</li> <li>* Topography (sloping site)</li> <li>*previously considered as part of housing association programme</li> </ul>
The Garnets	Beeston and Holbeck	Garnet (Place; Grove; Terrace) LS11 5HX	Clearance site	0.41	20	<ul style="list-style-type: none"> <li>*Sketch plans prepared by City Development Design Team suggest approximately 20 units can be delivered on the site</li> <li>*Brownfield site with in-filled cellars</li> <li>*Culverted water course running through site</li> <li>*Road and footpath diversions may be required</li> <li>* potential alternative delivery via a housing association</li> </ul>
Bradford Road	Ardsley and Robin Hood and Morley South	Bradford Road, Tingley, WF3 1NS	Former garage site	0.32	6 to 8	<ul style="list-style-type: none"> <li>*Electric Sub station at entrance to site may impact on design and access.</li> </ul>
<b>East North East</b>						

Beech Mount	Gipton and Harehills	Beech Mount, Gipton, LS9 6QT	Cleared housing site	0.2	6	* Risk of Town and Village Green application *potential footpath diversion required
Beech Walk	Gipton and Harehills	Beech Walk, Gipton, LS9 6QR	Cleared housing site	0.7	20	*Currently in use as a compound for roofing works by ENE due to be completed by early 2013.
St Hildas, Phase 3	Burmantofts and Richmond Hill	St Hildas, Cross Green, LS9 0BE	Partially cleared housing site	0.3	10	*The site is still interspersed with privately owned properties following cut in RHB funding for clearance. However there are still opportunities for infill development on cleared footprints of former properties
East Park Road	Burmantofts and Richmond Hill	East Park Road, Charlton Grove, LS9 9JD	Cleared housing site	0.5	15	*Risk of Town and Village Green application potential to mitigate risk by provision of smaller area of greenspace of enhanced quality

The approach to allocation has not yet been finalised however Housing Services may look at using a local lettings policy for a proportion of the new units to prioritise under occupying tenants in addition to allocation via the normal choice based lettings route. The properties will not begin to handover until probably July of next year.

This page is intentionally left blank

## Report of the Head of Scrutiny and Member Development

### Report to Scrutiny Board (Children and Families)

**Date: 25 April 2013**

### **Subject: Recommendation Tracking – Combating Child Poverty and Raising Aspirations**

Are specific electoral Wards affected? If relevant, name(s) of Ward(s):	<input type="checkbox"/> Yes	<input checked="" type="checkbox"/> No
Are there implications for equality and diversity and cohesion and integration?	<input type="checkbox"/> Yes	<input checked="" type="checkbox"/> No
Is the decision eligible for Call-In?	<input type="checkbox"/> Yes	<input checked="" type="checkbox"/> No
Does the report contain confidential or exempt information? If relevant, Access to Information Procedure Rule number: Appendix number:	<input type="checkbox"/> Yes	<input checked="" type="checkbox"/> No

### Summary of main issues

1. This report sets out the progress made in responding to the recommendations arising from the previous Scrutiny review in Combating Child Poverty and Raising Aspirations published on the 20<sup>th</sup> June 2012.
2. The Scrutiny recommendation tracking system allows the Scrutiny Board to monitor progress and identify completed recommendations; those progressing to plan; and those where there is either an obstacle or progress is not adequate. The Board will then be able to take further action as appropriate.
3. This report was deferred from the Scrutiny meeting 14 February 2013.

### Recommendations

4. Members are asked to:
  - Agree those recommendations which no longer require monitoring;
  - Identify any recommendations where progress is unsatisfactory and determine the action the Board wishes to take as a result.
  - Note the recommendations where satisfactory progress is being made.

## **1 Purpose of this report**

- 1.1 This report sets out the progress made in responding to the recommendations arising from the previous Scrutiny review into Combating Child Poverty and Raising Aspirations.

## **2 Background information**

- 2.1 Poverty is the root of most poor outcomes for children and blights the life of too many children in Leeds. Poverty lies behind the common factors for poor outcomes and must continue to be addressed in order to narrow the gap between the most and least advantaged children, young people and families in the city. The Scrutiny Board (Children's Services) therefore decided to undertake an inquiry around the themes of raising aspiration and combating child poverty.
- 2.2 At its meeting in June 2012, the Scrutiny Board (Children and Families) agreed the final inquiry report summarising its observations, conclusions and recommendations.
- 2.3 The Scrutiny recommendation tracking system allows the Board to monitor progress and identify completed recommendations; those progressing to plan; and those where there is either an obstacle or progress is not adequate. The Board will then be able to take further action as appropriate.
- 2.4 The Directors Response was presented to the Scrutiny Board at the meeting on the 26<sup>th</sup> of July 2012.

## **3 Main issues**

- 3.1 A standard set of criteria has been produced to enable the Board to assess progress. These are presented in the form of a flow chart at Appendix 1. The questions in the flow chart should help to decide whether a recommendation has been completed, and if not whether further action is required.
- 3.2 To assist Members with this task the Principal Scrutiny Adviser, in liaison with the Chair, has given a draft status for each recommendation. The Board is asked to confirm whether these assessments are appropriate and to change them where they are not. Details of progress against each recommendation is set out within the table at Appendix 2.

## **4 Corporate Considerations**

### **4.1 Consultation and Engagement**

- 4.1.1 Where internal or external consultation processes have been undertaken with regard to responding to the Scrutiny Board's recommendations, details of any such consultation will be referenced against the relevant recommendation within the table at Appendix 2.
- 4.1.2 The Executive Board Member for Children's Services has been consulted on the response to the recommendations.



## **4.2 Equality and Diversity / Cohesion and Integration**

- 4.2.1 Where consideration has been given to the impact on equality areas, as defined in the Council's Equality and Diversity Scheme, this will be referenced against the relevant recommendation within the table at Appendix 2.

## **4.3 Council Policies and City Priorities**

- 4.3.1 This section is not relevant to this report.

## **4.4 Resources and Value for Money**

- 4.4.1 Details of any significant resource and financial implications linked to the Scrutiny recommendations will be referenced against the relevant recommendation within the table at Appendix 2.

## **4.5 Legal Implications, Access to Information and Call In**

- 4.5.1 This report does not contain any exempt or confidential information.

## **4.6 Risk Management**

- 4.6.1 This section is not relevant to this report.

## **5 Conclusions**

- 5.1 The Scrutiny recommendation tracking system allows the Board to monitor progress and identify completed recommendations. Progress in responding to those recommendations arising from the Scrutiny review into Combating Child Poverty and Raising Aspirations is detailed within the table at Appendix 2 for Members' consideration.

## **6 Recommendations**

- 6.1 Members are asked to:
- Agree those recommendations which no longer require monitoring;
  - Identify any recommendations where progress is unsatisfactory and determine the action the Board wishes to take as a result.
  - Note the recommendations where satisfactory progress is being made.

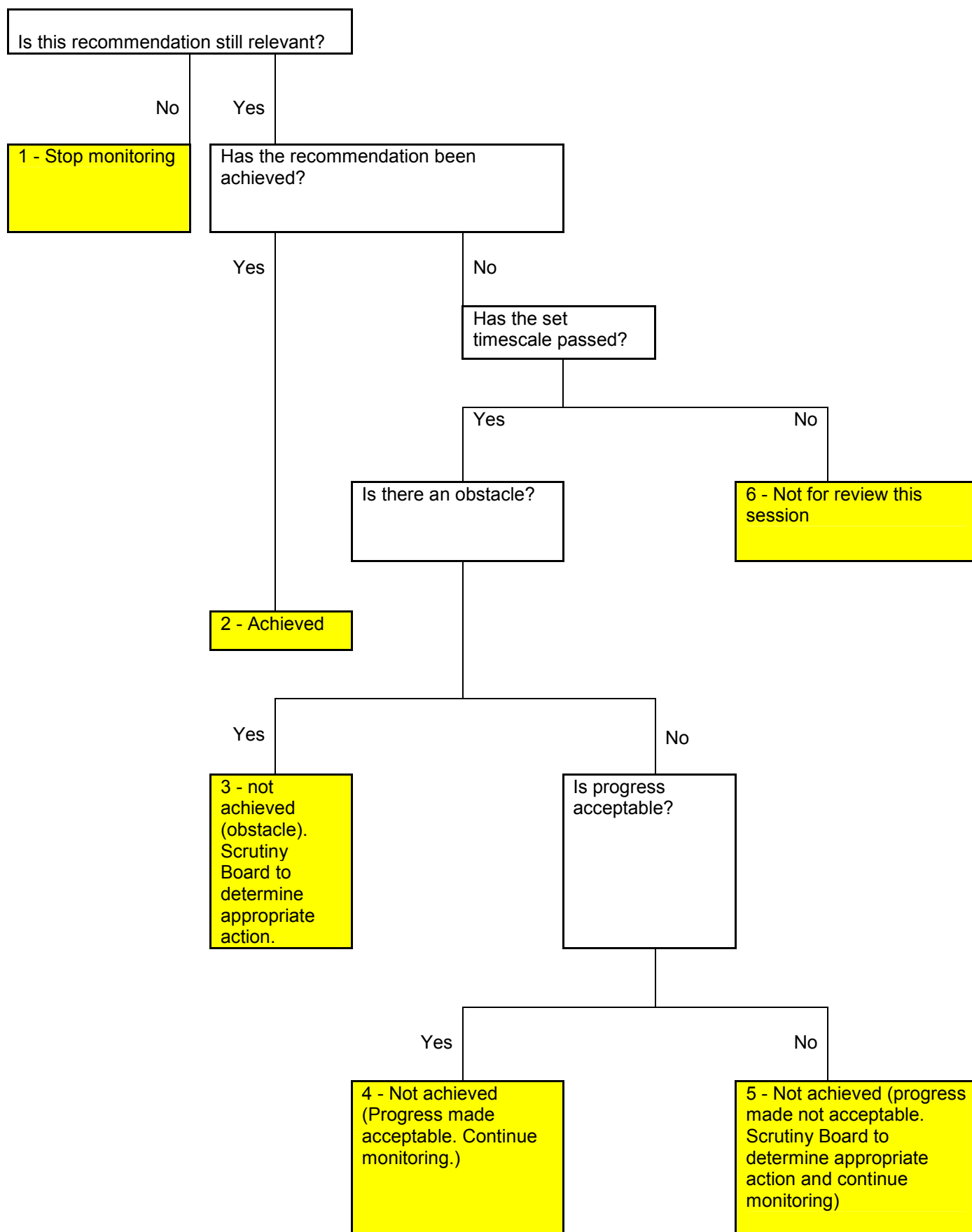
## **7 Background documents<sup>1</sup>**

- 7.1 Report of the Head of Scrutiny and Member Development to the Children and Families Scrutiny Board – Scrutiny Inquiry Final Report Combating Child Poverty and Raising Aspirations, 20<sup>th</sup> June 2012
- 7.2 Report of the Director of Children's Services to the Children and Families Scrutiny Board 'Response to Scrutiny Inquiry Final report - Combating child poverty and raising aspirations' 26<sup>th</sup> July 2012.

---

<sup>1</sup> The background documents listed in this section are available to download from the Council's website, unless they contain confidential or exempt information. The list of background documents does not include published works.

**Recommendation tracking flowchart and classifications:**  
**Questions to be Considered by Scrutiny Boards**



## Review of Combating Child Poverty and Raising Aspirations Inquiry (June 2012)

Categories

- 1 - Stop monitoring
- 2 - Achieved
- 3 - Not achieved (Obstacle)
- 4 - Not achieved (Progress made acceptable. Continue monitoring)
- 5 - Not achieved (Progress made not acceptable. Continue monitoring)
- 6 - Not for review this session

Recommendation for monitoring	Evidence of progress and contextual information	Status (categories 1 – 6) (to be completed by Scrutiny)	Complete
<p>Page 25</p> <p><b>Recommendation 1 - That the Director of Children's Services provides us with an initial update on progress with the Child Poverty Strategy when he brings the formal response to our recommendations in July 2012.</b></p>	<p><b>Directors Response</b> The Child Poverty group will produce a formal response on progress for the Scrutiny Board (Children and Families) in July 2012.</p> <p><b>Current Position:</b></p> <p>An update on the Child Poverty Strategy and the national consultation on the definition and measurement of child poverty can be found in the recent report to the Children's Trust Board (CTB) on February 1, attached as a separate paper to this appendix. An update on the four blocks of the Leeds Child Poverty Strategy can be found on pages 5-10 of the CTB report.</p> <p>The report includes a short section on the impact of welfare reforms, see paragraphs 3.6-3.7. Clearly, the cumulative impact of these reforms, other austerity measures and changes to the local government funding pose a significant risk in terms of an increase in</p>	<p>2</p> <p>Child Poverty Strategy to remain a regular agenda item for Scrutiny</p>	

child poverty. It is hard to be specific about impact but broad conclusions are possible.

Leeds is seeing a growth in Food banks which provide temporary respite for families who find themselves unable to provide essentials. We know that there are 2 under development, one established and one under consideration. Provided by the voluntary sector they are supported by the [Trussell organisation](#). The Trussell organisation has a specific concern about the impact of changes to [the social fund](#). They are concerned about meeting increased demand in a climate where there are reduced resources available. They are therefore happy to work with local authorities, but also wish to maintain their independence and focus on crisis intervention, and would not wish to be seen as a substitute for mainstream welfare funding.

The primary reason for children becoming subject to Child Protection Plans or becoming 'Looked-after' by the local authority is 'abuse or neglect'. These situations are generally linked to parental mental health issues, domestic violence and/or parental substance misuse. Underlying risk factors in families include fractured parenting (children not living with both of their natural parents); parental unemployment/ household living on benefits and overcrowded/inappropriate living accommodation. There is a significant risk, associated with all of the changes to the benefit system that households will become more stretched leading to an increase in social care referrals and caseloads.

An increase in personal debt is also a clear and significant risk to children, young people and their families. And given the role of affordable housing in tackling child poverty, then welfare reform changes pose further risks. In Leeds 14,200 households with children will lose an average of £2.61 per week as a result of the replacement of Council Tax Benefit with localised Council Tax

	<p>support schemes. (Overall a total of 27,000 people will pay more and an additional 7,000 will have to pay for the first time as the result of the changes). Reductions in housing benefit for ALMO and Housing Association tenants assessed as having too many bedrooms affect just over 6,700 and 1,500 people respectively. Of these 1,633 and 552 respectively are households with children.</p>		
<p><b>Recommendation 2 - That the Director of Children’s Services reports to us within three months on how the council and its partners are seeking to ensure the continued viability of money advice and credit union facilities within the city.</b></p> <p>Page 25</p>	<p><b>Directors Response:</b> A Community Development Finance Institution (CDFI) has been established in Leeds, in order to expand the availability of affordable financial services to low income households. Credit union increased membership in Quarter 4 and total number of members was 25,334 (of which 159 are new and 4,380 are junior). 1,206 loans were granted to financially excluded groups in Quarter 4 valued at £459,671. The set up costs for a telephone advice gateway with one common phone number for use across all advice agencies has been funded.</p> <p><b>Current Position:</b></p> <p>See pages 5-6 of the attached report to the CTB on February 1. Plus some latest figures for credit union activity: Credit union increased membership for quarter ended December 2012 and total number of members was 25,826 (of which 118 are new and 4,295 are junior). 2,359 loans were granted to financially excluded groups in this quarter valued at £946,179.</p>	<p>2</p>	
<p><b>Recommendation 3 - That the Director of Children’s Services reports back to us within three months on how he will ensure that workforce development plans are in place to increase front-line</b></p>	<p><b>Directors Response:</b> The Child Poverty Strategy group has advised the Welfare Reform Strategy Group to ensure that factors affecting child poverty and the workforce needs are taken account of in the Council’s preparations for Universal Credit changes, including</p>		

<p><b>staff's ability to recognise needs such as debt advice and fuel poverty and signpost people appropriately.</b></p>	<p>training the workforce. Training sessions available across the city for front line staff. Briefing sessions at Children's Trust Board Workforce Reform and Practice Development sub group, Children's Services leadership team and for cluster staff have taken place.</p> <p><b>Current Position:</b></p> <p>The Children's Services Workforce Development team will be running a series of roadshows around the city in June and July. Issues of child poverty (including free school meals, debt advice and fuel poverty) will be addressed in these roadshows along with guidance on signposting for more detailed information and advice.</p> <p>The Welfare Reform Strategy Board has implemented a range of activity preparing for the April 2013 reforms. This includes briefings for front line staff working for the Council or other key partners.</p> <p>There is also a city wide review of the provision and commissioning of advice services. See separate paper attached to this appendix.</p>	4	
<p><b>Recommendation 4 - That the Director of Children's Services reports back to us in three months on how the concerns raised about information sharing can be addressed.</b></p>	<p><b>Directors Response:</b> An information sharing agreement has been formally agreed between Leeds Community Health Trust and Children's Services around sharing data around all families under 5 years. As a direct result of this there has been a significant increase in registration of under 2 year olds in Children's Centers from around 30% to 60% and the identification of 2 year olds for vulnerable children's places is meeting the increased targets from 280 to place to 680 places by April next year</p> <p><b>Current position:</b></p> <p>The target is now for 1,000 additional places by March 2013, rising to 2,500 in March 2014. Part of the Council's work on the</p>	4	

	<p>Budgetplus proposals is to maximise the opportunities to ensure a cost efficient and effective service is developed from the expansion of early learning for disadvantaged 2-year olds.</p>		
<p><b>Recommendation 5 - That the Director of Children's Services reports back to us within three months on what is being done to increase the proportion of children and young people eligible for free school meals who are registered for this entitlement.</b></p>	<p><b>Directors Response:</b> An OBA workshop on Free School Meals was successfully undertaken on 22 February with partner actions identified. A Free School Meals Working Group has been established to implement the outcomes of the workshop. The first meeting took place on 12th June and was very well attended by school academies and other stakeholders. Draft terms of reference have been drawn up.</p> <p>Free school meal uptake is reported on a financial year basis. Results for 2011/12 are currently being finalised. They are likely to be inline with 2010/11 for primary schools with an increase in uptake in secondary schools.</p> <p><b>Current position:</b> Leeds FSM take-up is consistently below national levels, with around 5,000 children and young people not taking their entitlement. In the 2011-12 financial year the gaps to national continued to narrow at secondary, but increased significantly at primary.</p> <p>Data for 2011/12 shows take up in Primary at 76.7% (76.6%) in Leeds compared to 81.8% (79.8%) nationally, and take up in</p>	<p>4</p>	

<p>secondary at 68.9% (67.1%) in Leeds compared to 70.6% (69.3%) nationally. Brackets show 10/11 figures.</p> <p>Key areas in the FSM Working group action plan include:</p> <ul style="list-style-type: none"> <li>• Catering services in new schools</li> <li>• Meetings with catering contractors</li> <li>• Head teacher control over catering contracts</li> <li>• Inclusion of FSM issues in regular programme of meetings between Head teachers and School improvement advisers</li> <li>• Nomination of school governor FSM champions</li> <li>• Identification of FSM champion schools who can share best practice</li> <li>• Inclusion of FSM issues in cluster business planning</li> <li>• Training and advice for family support workers</li> <li>• Publicity campaigns</li> </ul>			
<p><b>Recommendation 6 - That the Director of Children's Services reports back to us within three months on the potential for the Child Poverty Strategy to engage with private sector housing providers on a similar model to social housing providers in combating the effects of poverty.</b></p>	<p><b>Directors Response:</b> Good attendance and engagement from housing has been secured for the Child Poverty Strategic group and the Head of Housing Support is attending the new Children's Access to Service Panel (South). The Children and Young People's Housing Plan has been made available for comment to children and young people's 'focus' groups.</p> <p>Although there are some good examples of Housing Services, Leeds ALMO and CSW working imaginatively to put in place housing options that keep families together and help children to thrive, such action is not universally embedded. The Children and Young People Housing Plan will roll out such good practice.</p> <p><b>Current Position:</b> Effective partnering work between Housing Services and Social Work services in the South and West wedges have been developed with named officers in Housing Services providing a ready access</p>	<p>4</p>	



	<p>point for Social Workers working with families who are in housing need. Priority awards for re-housing and financial interventions have been made to facilitate re-housing. Two recent examples include the re-housing of two families each with 8 plus children, where there was a risk of care placement: for one family by covering a bond/rent in advance payment to access a private rented tenancy and the second by purchasing furniture after a priority award led to a council housing let. There is work to do to develop comparable partnering arrangements in the east of the city. Housing Services and Children's Services are jointly funding a Housing Prevention Fund for Children that covers the cost of interventions as described above. The key criteria is that a failure to fund an intervention could result in higher costs being incurred: such as care placements. Housing Services is also working with the Children's Disability Team to provide a case work response around the two housing pathways of helping families stay in their existing homes, through adaptations, or make a planned move to alternative accessible housing. The Housing Prevention Fund is being used for such cases and agreement has been reached to jointly fund adaptation funds above the mandatory cap of £30k.</p>		
<p><b>Recommendation 7 - That the Director of Children's Services makes more information about services for children and families available at One Stop Centres.</b></p>	<p><b>Directors Response:</b> There is increased Jobshop presence in One Stop Centres in support of the Universal Credit pilot activity. There has been a reinstatement of the £35,000 of funding for Children's Centre advice service following the original cut in funding. This should hopefully result in service being provided from a further 7 centres from October 2012 in addition to the 13 originally planned for 2012/13. The Children's Centres Advice Service is to receive ongoing funding in 2012/13 and it is proposed that this will become a permanent funding stream managed via the Advice Agencies Grant. The mainstreaming of the funding provides an opportunity to make longer term plans for the service, ensuring that as many clients as</p>		

possible benefit from it with the reduced level of resource available.

A mail out has been completed to approximately 9,500 households who are likely to be eligible for the Government Warm Front scheme to try and increase take-up of heating and insulation measures through that scheme whilst still available. We are currently promoting 'Wrap up Leeds' free loft and cavity wall insulation scheme, which is available to everyone, but also targeted at areas of low income with a large number of suitable properties. Leeds has generated 37 hotspots referrals during January, 64 in February and 53 in March.

**Current Position:**

The Children's centre advice services are included in the city wide review of the provision and commissioning of advice services. See separate paper attached to this appendix. The commissioning scope of the new model is still being finalised, but will definitely include the current Environment and Neighbourhoods grant and advice via Children's Centres. Likely to also include outreach support via GP surgeries and for clients with mental health problems but this will not be included until April 2014. Progressing with market sounding exercise which will stay on the Council's tendering system until late January 2013.



This page is intentionally left blank

# Leeds Children's Trust Board

<b>Date of meeting:</b>	February 1 <sup>st</sup> 2013
<b>Author:</b> <b>Tel No:</b> <b>Email:</b>	Sue Rumbold 01132475574 sue.rumbold@leeds.gov.uk
<b>Report title:</b>	Child poverty- update on progress and national consultation

## **Summary:**

The report updates CTB on progress against the Leeds Child Poverty Strategy, and considers the issues raised in the national consultation.

## **Recommendations:**

1. CTB to agree a response to the national consultation as follows:

1.1 Income is a root cause of many kinds of child poverty and a factor in all child poverty. It should be the main element of the definition and measurement of child poverty.

1.2 The current income measures, particularly below 60% of median income provide a clear and easily understood objective measure of local and national progress.

1.3 Worklessness is a key issue but many children and families affected by child poverty are in work or working households. Access to stable and adequately paid job opportunities is therefore central to any anti poverty strategy.

1.4 Poverty is multi-dimensional. There are issues other than income. National and local action planning should recognise different kinds of child poverty, experienced, lived and tackled in different ways, but income and sustainable employment are key factors.

1.5 It is important for national policy to recognise the significant impact on levels of child poverty of current policy changes in respect of welfare reforms and local government spending. Mitigating policy initiatives are an urgent priority.

1.6 Parental capacity as well as parental health and skill is an important dimension. Children's services partners in Leeds and nationally have considerable experience of delivering and monitoring parenting programmes.

2. CTB to note progress against the Leeds Child Poverty Strategy and to identify any activity that would help further progress.

## **1. Purpose of report**

1.1 The report updates CTB on progress against the Leeds Child Poverty Strategy, and considers the issues raised in the national consultation.

## **2. Background information**

### **National consultation**

2.1 The Child Poverty Act 2010 became law in March 2010 and enshrines in law the previous Government's 2008 commitment to eradicate child poverty in the UK by the year 2020

2.2 In June 2012 the Government reported that the 2010 target to halve child poverty was missed. The report reiterates the Government's commitment to ending child poverty. The report highlights the perceived weakness of using the relative income poverty measure in isolation and announced a consultation on how child poverty is measured. Household income less than 60% of current median is the main relative income measure

2.3 The consultation explains that recently released statistics regarding the levels of relative child poverty in the UK show that last year 300,000 fewer children were 'living below the relative poverty threshold' than the year before. However this fall in poverty is 'due to a fall in the median income nationally which pushed the poverty line down'. Absolute poverty remained unchanged. The children who were effectively moved out of poverty were in fact no better off than before. In Leeds the rate has remained relatively stable at just over 35,000 children or 22-23%.

2.4 The closing date for responses to the consultation is February 15. The consultation reasserts the Coalition Government's commitment to ending child poverty, making a clear argument for doing so. It cites the cost of child poverty to society, its financial cost to the tax payer through the welfare bill, and the importance of ensuring that all children can achieve their potential so that the UK has a skilled workforce that can compete in a global market.

2.5 The Government argues that a new multi-dimensional measure will take account of the different drivers that cause a child to live in poverty. This is seen as crucial in developing a strong understanding of the reality of a life in poverty and how it can be tackled. Eight dimensions are identified:

- Income and material deprivation
- Worklessness
- Unmanageable debt
- Poor Housing
- Parental skill level

- Access to quality education
- Family stability
- Parental Health

2.6 The consultation poses specific questions about possible dimensions, the possible relationships between dimensions, and the details of the usefulness and measurement of particular dimensions, but also invites general comments on the proposals. (See [consultation documents.](#))

### **Leeds child poverty strategy**

2.7 There are four blocks in the current Leeds child poverty strategy.

- Financial support
- Best start in life
- Employment & Adult Skills
- Housing & Neighbourhoods

2.8 The strategy is managed by the Child Poverty Outcomes Group chaired by Councillor Blake. Work is underway to review the current strategy based on an analysis of the strengths of the current approach and the opportunities for building on these strengths.

## **3. Main issues**

### **Response to National consultation**

3.1 The central importance of income is emerging as a key element of commentary on the consultation both nationally and at the Leeds Child Poverty Outcomes Group in Leeds. Income is seen as a root cause of many kinds of child poverty and a factor in all child poverty. It should therefore be the main element of the definition and measurement of child poverty.

3.2 The use of below 60% of median household as a measure of relative poverty provides a clear, widely recognised measure of well being and progress towards child poverty targets

3.3 The importance of in work poverty is also central to national and local comment on the consultation. Worklessness is undeniably an important dimension of poverty. However, recent research by the Joseph Rowntree Foundation (JRF) found that 6.1 million people in poverty are ***in working households***; excluding pensioners, in-work poverty now outstrips workless poverty at 5.1 million households; 6.4 million people now lack the paid work

they want; with 1.4 million part-time workers wanting full-time work – the highest figure in 20 years. JRF also found that the churn of people in poverty or out of work is substantial, 33% experience at least one period of low income in a four-year period.

3.4 The consultation rightly draws attention to a range of factors which impact on poverty. Poverty is multi-dimensional. There are issues other than income, and there are different types of poverty requiring different strategies. National and local action planning should recognise different kinds of child poverty, experienced, lived and tackled in different ways. Having said that there needs to be a clear recognition that income will usually be a defining characteristic and nearly always a dominant and causal characteristic, and a key to effective strategy.

3.5 In the light of this it is useful to have a checklist of factors and a basket of indicators, and the consultation makes a convincing case for income and material deprivation, worklessness, unmanageable debt, poor housing, parental skill level, access to quality education, family stability, parental health. Parental capacity is equally important. Health and skill level are part of a wider set of issues around the development of effective parenting. Children's services partners in Leeds and nationally have considerable experience of delivering and monitoring the effectiveness of parenting programmes.

## **Progress in Leeds**

### **Welfare reform**

3.6 In Leeds 14,200 households with children will lose an average of £2.61 per week as a result of the replacement of Council Tax Benefit with localised Council Tax support schemes. (Overall a total of 27,000 people will pay more and an additional 7,000 will have to pay for the first time as the result of the changes). Reductions in housing benefit for ALMO and Housing Association tenants assessed as having too many bedrooms affect just over 6,700 and 1,500 people respectively. Of these 1,633 and 552 respectively are households with children.

3.7 This without any consideration of the introduction of Universal Credit which may not now start in Leeds until early 2014, or the impact of the capping of benefit increases over the next 3 years. (Nationally it is estimated that the decision to cap benefits will draw an additional 200,000 children into poverty (source: parliamentary answer); and that overall relative child poverty will increase between 2010–11 and 2015–16 by around 400,000, (source: Institute of Fiscal Studies)



## Progress against the four blocks

### 3.8 Financial support

#### What we have done

- Established a Community Development Finance Institution (CDFI) in Leeds, in order to expand the availability of affordable financial services to low income households.
- Credit union increased membership for quarter ended September 2012 and total number of members was 25,708 (of which 177 are new and 4,306 are junior). 1,294 loans were granted to financially excluded groups in this quarter valued at £522,483. *(Latest update- Credit union increased membership for quarter ended December 2012 and total number of members was 25,826 (of which 118 are new and 4,295 are junior). 2,359 loans were granted to financially excluded groups in this quarter valued at £946,179)*
- Funded the setup costs for a telephone advice gateway with one common phone number for use across all advice agencies. Volunteers now operating three days a week (Mon, Tue, Fri) for 6 hours each day.
- Proposals have been developed for a co-ordinated campaign to help increase the take-up of Free school meals. The plan was launched at an event at Harehills Primary School on Friday 16 November. This was to celebrate that a Harehills pupil designed a logo to be used by the All Party Parliamentary Group (APPG) on School Food.

#### New actions

- The CDFI have now secured funding - Key Fund (£150,000 loan) and an RBS charitable foundation (£100,000 loan). The CDFI are now lending.
- Yorkshire Bank have agreed to give their declined loan applicants an application form for a CU loan.
- Contributed to the Welfare Reform Strategy Group to ensure that factors affecting child poverty are taken account of in the Council's preparations for Universal Credit. Participating on DWP working Group looking at aspects of implementation of UC. Currently working on a local Social Fund scheme to replace the one previously run by DWP.
- Review of Advice Provision across the city - The commissioning scope of the new model is still being finalised, but will definitely include the current Environment and Neighbourhoods grant and advice via Children's Centres. Likely to also include outreach support via GP

surgeries and for clients with mental health problems but this will not be included until April 2014. Progressing with market sounding exercise which will stay on the Council's tendering system until late January 2013.

- Further 'Hotspots' training sessions to be delivered to front line staff.
- Working with the city region to develop a Green Deal/ECO framework which will assist vulnerable people across the city, particularly those in older hard to treat properties as well as involving local community groups and employers.
- Currently running a small scale project to install polybead wall insulation in properties with non standard cavity walls. Around 2,000 potential householders contacted so far for this scheme.
- FSM action plan now fully populated and the Implementation sub group will next meet in January to take forward.

### **3.9 Best start in life**

#### **What we have done**

- Early Start Service: The expansion of the HV workforce continues in line with the trajectory. Early Start pathways detailing the service offer to Looked After Children and describing Pre birth assessment support, have been completed. A comprehensive Early Start workforce development plan has been written. The roll out of Preparation for Birth and Beyond community based antenatal programme on track.
- Family Nurse Partnership: NHS commitment to sustain and expand FNP confirmed and the programme continues to successfully recruit and work with eligible teen parents. Group FNP continues to be a success in terms of numbers attending. Leeds has not taken up an opportunity to be part of a national project to evaluate performance, partly because of local capacity and also because the local model differs slightly to the national research model.
- Infant Mortality: 5 year data on the IM rate in deprived Leeds continues to show a decline, and is now at 5.5 deaths per 1000 live births. Pathways detailing the targeted support available to Gypsy, Roma and Travellers new parents have been completed and are being implemented. Materials to promote the importance of not co sleeping when under the influence of alcohol and drugs have been developed and are being distributed, including beer mats for use in pubs over the festive period. The Breastfeeding peer support project expansion is progressing well.
- In Leeds in 2012 around 5560 (63%) children reached a good level of development in the Early Years and Foundation Stage. The percentage of children reaching this threshold increased steadily

between 2008 and 2010. In 2011, the improvement accelerated to five percentage points, and in 2012 this annual improvement has been maintained. The Leeds rate of improvement was the same as the national rate, but above the statistical neighbour improvement, so performance in Leeds is now in line with these authorities. Leeds is also now in the second quartile of local authorities nationally for this indicator.

- The 'low achievers gap' indicator has narrowed slightly in 2012 from 35.0% to 33.6% but is still wider than the national gap of 30.1%. In 2012 as in 2011, there are only 10 local authorities with a larger gap indicator than Leeds. A keen focus around narrowing the attainment gap is required over the next few years.

## **New Actions**

- **Early Start Service:** Quality assurance visits will take place with Early Start Teams in January. The Infant Mental Health Service will deliver Babies, Brains and Bonding training city wide, to support all ESTs in their work with parents to ensure good parent child attachment. 3 further teams will be engaged to rollout Preparation for Birth and Beyond, which will result in the programme being available from 9 community bases across the city by March 31st 2013.
- **Family Nurse Partnership:** From April 2013, the commissioning of FNP will move to the NHS Commissioning Board, with the intention that it will transfer to Public Health within the Local Authority from April 2015. However, there is currently no clarity about how the NHSCB will undertake this role in April.
- **Infant Mortality:** Leeds will be assessed for Baby friendly Initiative level 3 accreditation in the first quarter of 2013. A breast feeding peer coordinator role will be recruited. Brief intervention training with Children Centre staff, new teen friendly materials and the expansion of Leeds smoke free homes programme will contribute to reducing smoking prevalence in pregnancy. Insight work will be completed and material produced including leaflet, web pages and audio resource to increase understanding of the risks associated with consanguinity.
- **Breaking cycles of low aspiration and disenfranchisement** with education is an important step for narrowing the attainment gap that can begin at the EYFS and continue beyond it. This works best when parents and carers are actively engaged to support their child's learning. Training is being commissioned to deliver the Level 3 Award in Work with Parents to relevant parts of the children's workforce (including cluster-based and third sector staff). This will enable staff to be confident and skilled in working with parents to meet their child's

needs and this will impact on their children's behaviour, learning and development.

- Finalise Early Years Improvement Strategy that sets out how settings and schools will be supported to implement the revised EYFS framework, including supporting them with the requirements of the progress check at age 2.

### **3.10 Employment and Adult Skills**

#### **What have we done**

- Launched the Apprenticeship Training Agency which will improve the availability and accessibility of Apprenticeships. Fully operational from end January 2013.
- Worked with Jobcentre Plus to establish Workclubs in areas of the city where other jobsearch support is minimal/unavailable.
- Established The Point as a learning facility for young people and adults, complemented by 1:1 guidance and jobsearch support facilities.
- Developed a programme of engagement activities for young people at The Hub.
- Established the Community Learning Trust Board to increase the range of stakeholders influencing provision in localities.
- Linked in with the roll out of welfare reform awareness activities to promote jobsearch support services.
- Developing local 'recruitment hub and satellite' model in support of projected growth in retail sector.

#### **New actions**

- Progress new projects identified by the new Community Learning Trust Board, some of which include targeted work within Children's Centres
- Review the Wider Family Learning provision currently commissioned within Children's Centres.
- Work with Children's Services to increase the range of activities available within the devolved Youth Contract to support 16/17 year olds.
- Work more closely with area management teams to identify means of improving communities' readiness to access local employment opportunities.
- Exploring potential future models for additional sector delivery to widen participation for key growth areas in the city.
- Developing access routes for opportunities within the ALMO's through apprenticeships and sector based delivery with Job Centre Plus.

- Establishing the framework timeline of the PFI Apprenticeship programme proposed first cohort starts planned for Summer 2013, over first 2 year period 51 starts are forecast.
- Launch the city's second recognition of apprentice success at the apprenticeship awards for March 2013.
- Planned establishment of the external company and launch of the Leeds Accredited Training Agency ( LATA) in November which aims to create an additional 600 apprentice starts targeted primarily at 16-17 year olds over the next 3 years.
- Secured funding to deliver LCC Youth Inspire programme across the Council, proposed start early 2013.

### **3.11 Housing & Neighbourhoods**

#### **What we have done**

- Implemented agreement between Housing services and Children's services to prevent evictions and subsequent entries to the social care system.
- Staff development programme for those working on domestic violence.
- Project to support families affected by domestic violence operational in 2 clusters
- Work with high impact alcohol users is progressing across the city.
- Assessed current system for identifying pregnant women and problem families when engaging with community based drug and alcohol services (ADS). Process is in place to enable women to access specialist support.
- Case conferences convened for disabled children whose families require housing options.
- Youth Offending Housing Forum established to discuss housing options for young people due to be released from custody.
- Decision made that a timely case conference should be mandatory for all ALMO possession cases involving tenants with children.
- Housing Services and Pathway Planning service working in partnership to discuss housing options for 'out of area' placements looking to be re-settled in Leeds.
- Clarification sent to all ALMOs that unborn child has a council housing bedroom requirement at the point when proof of pregnancy is given.
- Band A and Band A Plus housing awards made to prevent care placements and facilitate children being returned to live with parents.

#### **New actions**

- There are some good examples of Housing Services, Leeds ALMO and Children's Services working imaginatively to put in place housing options that keep families together and help children to thrive. However, such action is not universally embedded and the Children and Young People Housing Plan will try to roll out such good practice.
- Work beginning in Seacroft to develop services, including for drug and alcohol users based on good practice Bromley by Bow Healthy Living Centre. Holistic support for vulnerable individuals/families.
- Across Leeds 195 repeat alcohol specific hospital admissions have been recorded and targeted work to reduce the likelihood of further admissions in these individuals is progressing.
- Continuing work to develop application of a phone based project, trialled in Bolton NHS which has substantially reduced drop out from alcohol treatment programmes and could support other users e.g. those subjected to domestic violence.
- Working with NHS Leeds and West Yorkshire Police to develop joint action around alcohol awareness in Harehills, linking alcohol abuse and domestic violence work
- Project to identify and support young carers in schools, including checking Free school meal eligibility.
- Checking Family Intervention Service assessment for mechanism to identify families and help them to claim FSMs entitlement.
- Inner N East Area Committee now supporting work to support food based work in East North East locality. Around food in school holidays, food growing and potential food bank development.
- Leeds West Foodbank developing- located in Armley.
- Establish foodbank in South Leeds.
- Establish foodbank in Inner North East.

#### **4 Implications for governance, policy, resources, CYPP outcomes**

- 4.1 The Child Poverty Act 2010 placed a statutory responsibility on the local authority to have a partnership group responsible for agreeing and signing off a child poverty strategy. Minimising the affects of Child poverty is a cross cutting theme in the CYPP, and poverty and inequality is a cross cutting theme in all the city priority plans.
- 4.2 Many priorities in the strategy are delivered as commissioned services. In future a number may be traded services to GPs, clusters of schools and children's centres.

#### **5 Relationship to other partnership activity**

- 5.1 There are clear overlaps between the work of the child poverty group and other partnership activity which is reflected in strong partnership representation on the group. Much of the work is shared across the health inequalities agenda and work is currently being done to explore how these links can be strengthened through the agenda for change in the health services.

This page is intentionally left blank



## **Advice Services Review and Commissioning Members' Briefing Note – December 2012**

### **Introduction**

The Advice Agency Project Board and Steering Group (made up of representatives from Leeds City Council and NHS Leeds Public Health) are reviewing the advice services they currently fund. This is in response to the significant increase in demand for advice brought about by the welfare reforms, and the subsequent need to deliver advice services that can meet this rising, and increasingly complex, demand.

The review is an opportunity to build on the large amount of good practice already being delivered by the advice network in Leeds, and to also identify where provision can be remodelled or modernised in order to support more clients, more quickly. This work will inform the development of a new advice service for Leeds to be underpinned by longer-term Council funding of at least three years. The Council's Welfare Rights Unit is a major contributor to the review, and will remain a key provider of advice on welfare-related issues alongside the new service.

### **Background and context**

Demand for free and independent advice continues to increase as the ongoing impact of the recession and the Government's welfare reforms are felt across the city. The highest areas of current demand are related to debt, housing and welfare benefits, although demand for advice on immigration and employment also remains high. At the same time, the amount of Government funding for advice provision is decreasing.

These factors are putting extra pressure on advice providers, including the Welfare Rights Unit, to support more clients but with the same or less resource. Therefore, there is an ongoing need for the Council, and its partners, to continue to identify and implement new and improved approaches to delivering advice services that can meet the needs of all localities. It is equally important that the Council's funding for advice is administered in an open, accessible and transparent manner, and that it is made available over a longer period to improve planning and sustainability of provision.

In July 2012, the Council's Corporate Leadership Team agreed that detailed work should be undertaken to inform how advice provision across Leeds is commissioned and delivered. This would need to focus on the implementation of the key recommendations from the review into welfare advice undertaken by the Chief Officer for Revenues & Benefits in July 2011. In essence, the work would need to inform what the Council wants to buy from advice agencies and how it wants to buy it. The aim will be to put in place a more coordinated and accessible service that makes best use of technology, innovation and public sector assets to meet the rising demand for impartial and high quality advice.

### **Current Advice Provision in Leeds**

The combined value of advice services in Leeds commissioned by the Council and NHS Leeds (Public Health) in 12/13 is approximately £1.8m. Environment and Neighbourhoods provide the majority of this (70%) via the advice agency grant, which currently supports three advice agencies as follows:-

- Leeds CAB (£726,735)
- Chapeltown CAB (£334,062)
- Leeds Law Centre (£164,987).

This funding supports the delivery of a range of services, from initial assessment and referral, through to detailed ongoing casework. It is primarily delivered face-to-face via 'drop-in' surgeries and appointments, and via a telephone gateway.

Different parts of the Council are also involved in advice provision, including the Welfare Rights Unit (advice and support related to benefit claims and appeals), Adult Social Care (advice for people with disabilities and mental health problems) and Children's Services (advice for parents via the Children's Centres network). In addition, NHS Leeds (Public Health) commission advice services via GP surgeries, health centres and day care centres. Some of these services are co-commissioned with Adult Social Care e.g. Leeds DIAL and the Mental Health Outreach Service.

### **Consultation**

To date, the review has focussed on consultation with advice providers across the city (such as the two CABs, Burley Lodge Advice Agency; St Vincent's Advice Centre, Ebor Gardens Advice Centre and DIAL Leeds), with other key stakeholders and with current users of advice services. A questionnaire to all providers and key stakeholders was distributed in September, which asked for views on a wide range of issues, including key areas of demand for advice, access routes and good practice to be built on. Advice providers are now consulting with their clients to determine how, where and when people want to access advice. The findings from the consultation will be used to directly shape and inform the new service.

### **Market Sounding and Commissioning**

The Council has just commenced a market sounding exercise via its electronic tendering system. This is to gain a clearer understanding of which organisations have the experience, expertise and appetite to deliver an advice service for a city as large and diverse as Leeds. The exercise lasts until the end of January 2013 and will be used to determine the most appropriate approach to commissioning the new service. Timescales for the new service commencing will also be dependent on the outcome of the market sounding, but at this stage we anticipate that the latest start-date will be from April 2014.

It is important to note that current funded provision will remain in place up to the point that the new service begins, and that any potential changes to funding agreements with current providers will be handled in a sensitive and supportive manner.

### **Ongoing Communication**

The Council is committed to keeping the advice sector in Leeds fully up to date with the review and commissioning process. To date, this has included updates at meetings of the Advice Leeds Network and the Financial Inclusion Steering Group, and we expect these to remain the primary communication channels moving forward.

Regular briefings will also be produced for Members and senior officers, with the next following in February 2013 on conclusion of the market sounding exercise.

If you require any further information about this work, please do not hesitate to contact Henry Rigg or Julie Staton in Environment & Neighbourhoods on 0113 2476752 / 2475951, or [henry.rigg@leeds.gov.uk](mailto:henry.rigg@leeds.gov.uk) / [Julie.staton@leeds.gov.uk](mailto:Julie.staton@leeds.gov.uk)

This page is intentionally left blank

## Report of the Director of Children's Services

### Report to Scrutiny Board (Children and Families)

Date: 25<sup>th</sup> April 2013

Subject: Update on recent inspections



Are specific electoral Wards affected? If relevant, name(s) of Ward(s):	<input type="checkbox"/> Yes	<input checked="" type="checkbox"/> No
Are there implications for equality and diversity and cohesion and integration?	<input type="checkbox"/> Yes	<input checked="" type="checkbox"/> No
Is the decision eligible for Call-In?	<input type="checkbox"/> Yes	<input checked="" type="checkbox"/> No
Does the report contain confidential or exempt information? If relevant, Access to Information Procedure Rule number: Appendix number:	<input type="checkbox"/> Yes	<input checked="" type="checkbox"/> No

### Summary of main issues

1. During the first three months of 2013, Leeds Children's Services were visited and assessed by OfSTED for both a review of Independent Reviewing Officers and a pilot of a new inspection framework for Looked After Children and Care Leavers. In addition Leeds asked to be evaluated by LILAC (Leading Improvements for Looked After Children – an organisation led by young people who have been in care).
2. Whilst these visits did not cover the range of issues of a full OfSTED inspection they did together provide a very robust examination of progress in the service and valuable feedback on progress and where further improvement is needed.
3. The main findings were:
  - *Independent Reviewing Officers:* OfSTED judged the service to be very effective overall. Areas highlighted for praise included: committed staff; a strong child focus; good arrangements for independent challenge but effective joint working with social workers. The arrangements for peer and manager observation will be cited as national best practice.
  - *Support for Looked After Children and Care Leavers:* OfSTED noted continuing improvement and progress in Leeds services for Looked After Children and Carer Leavers.. All children were judged to be safe and practice was seen as sound and improving. The service was praised for its ambitions,

and for its strong focus on children and permanence. Support for foster carers and adoption was seen as effective and improving.

- *LILAC*: the assessors judged that Leeds has met all seven standards for involving children and young people in improving their care and their lives.

4. The overall picture these inspections provide is a positive one; of an improving service, which is child focused, innovative and ambitious for its children. Both OfSTED and young people have praised the progress made in the past two years. Where these assessments have identified issues, capacity to improve is strong as these have already been identified by the service and plans are in place to improve.

### **Recommendations**

5. The Board is recommended to note the report.

## **1 Purpose of this report**

- 1.1 The purpose of this report is to provide the Board with an update on recent external inspection and assessments.

## **2 Background information**

- 2.1 OfSTED continue to provide a high level of external scrutiny and challenge through their inspection of Local Authority children's services. Over the past year a significant number of councils have been judged to be 'inadequate' for their safeguarding arrangements.
- 2.2 OfSTED are reviewing their current inspection arrangements and are likely to move to a system of two separate main inspections: one for safeguarding and the other for services for Looked After Children and Care Leavers.
- 2.3 Leeds has not had a full Local Authority inspection of children's services since Autumn 2011. At that time OfSTED noted the strong improvements in services in Leeds and judged the authority to be 'adequate' overall.
- 2.4 Whilst the Council has not had a full OfSTED inspection since 2011, there have been several other assessments undertaken in the past few months. In January OfSTED visited to examine the Leeds Independent Reviewing Officer service as part of a national thematic review. OfSTED returned in February to work with Leeds to pilot elements of their new inspection framework for Looked After Children and Care Leavers.
- 2.5 In addition to these OfSTED activities, the Council has also asked to be assessed by LILAC (Leading Improvement for Looked After Children), an organisation led by young people with experience of the care system that reviews how well council children's services are involving children and young people in their care. This assessment took place in February alongside the OfSTED visit.

## **3 Main issues**

### *Independent Reviewing Officer Thematic Review*

- 3.1 On the 30<sup>th</sup> and 31<sup>st</sup> of January 2013 Ofsted carried out a thematic inspection into the quality of the Independent Reviewing Officer service. The inspection was one of ten IRO themed inspections across all Local Authorities. The inspection involved:
- A review of a sample of cases – some identified from a list of cases provided to the inspection team in advance, and others selected at random while the team were here.
  - Meetings with IROs, social workers, IRO managers, Looked After Children, foster carers and senior managers.
  - Consideration of key documents.

- 3.2 The inspection did not receive a grading; however the inspectors provided very positive feedback about the IRO service and social work practice. OfSTED were impressed with the enthusiasm and commitment of the IROs and Social Workers they met, and by the fact that both groups knew their children well and were clearly focused on delivering the best possible outcomes for them.
- 3.3 The inspectors identified no cases where they were concerned about practice, and in their feedback felt that in all cases interventions were purposeful, and that the IROs provide effective support and challenge to social workers which is recognised and valued.
- 3.4 The inspectors identified a number of positive features in the way we work in Leeds:
- The IRO service is independent of the children’s social work service but has a strong link.
  - The dispute resolution process and Quality Assurance processes are well understood by social workers and IROs.
  - The IRO service is child-focussed and engages well with young people.
  - IROs are involved in Quality Assurance and case auditing, and this is used to inform practice development.
  - The inspectors saw evidence in cases of good communication between IROs and social workers.
  - They felt that social workers, IROs and senior managers worked well with CAFCASS.
- 3.5 The inspectors also noted our approach to peer and manager observation of practice as an example of good practice, and informed us that this will be written up as such when the thematic report is published.

*Pilot of Looked After Children and Care Leavers Inspection*

- 3.6 On the 13<sup>th</sup> and 14<sup>th</sup> February OfSTED visited Leeds to work with the Council to test out their methodology in relation to the new arrangements for the inspection of services for Looked After Children and Care Leavers.
- 3.7 Although this was not a full inspection the 9 inspectors were able to provide some feedback on what they had found as a result of their detailed analysis of 20 cases, case discussions with practitioners, focus groups, visits to the LAC health Team, MST, Therapeutic Social Work Team, meetings with foster carers and with the Head of the Virtual School. They stressed that these were the lines of inquiry that they would have tested in more detail with us had it been a full inspection.
- 3.8 The main findings were as follows:
- They found no cases where a child was unsafe or where they had concerns about practice.



- The team were agreed that services for looked after children and care leavers in Leeds were improving.
- Front line practitioners knew and understood the strategic direction of and objectives for services.
- There was a clear emphasis on supporting children to achieve permanence
- Leeds had high ambitions for looked after children and care leavers and for services to support them

3.9 The team went on to provide some more detailed feedback on the areas of strength they had identified in services provided through Children's Services and partners:

- They reported that following their case discussions with social workers and others it was clear that practice is much stronger than is recorded in the electronic case files. Social workers and managers knew their cases well.
- Foster Carers are well supported. Carers were very positive about the Therapeutic Social Work Team and inspectors reported they were able to find evidence, through tracked cases, that the team was having a positive impact on placement stability.
- They thought that Leeds was somewhere that embraced and encouraged innovative practice such as MST, Family Group Conferences and Early Start Centres.
- Inspectors fed back that the health of looked after children was a high priority for services, and that Initial Health Assessments were of very good quality.
- They also noted the significant improvement over the past three years of educational outcomes for looked after children.
- They found effective commissioning of services for looked after children.
- They highlighted that there was a high level of good quality direct work taking place with looked after children, and thought that this was related to the feedback they received from practitioners that the re-structuring had improved capacity in the service.
- They noted an increase in the use of Special Guardianship and felt that this reflected the strong focus on providing children with permanence.
- There was increasing capacity in Adoption.

3.10 Inspectors also identified a number of areas for improvement. It was reassuring that none of these came as a surprise to the service and the Senior Management Team, and in many cases we have plans in place to take forward services and support practice.

- They noted that care plans were not always Specific Measurable Achievable Realistic and Timely.
- Some plans were focused on the key issue for the child, but to the extent that other needs were overlooked.

- Many of the Pathway Plans and Personal Education Plans they reviewed did not evidence the involvement of and ownership by children.
- Not all plans had a contingency plan.
- Inspectors would have wanted to look in more detail at how supervision was being used to monitor and challenge practice and to drive care planning for looked after children as there were some inconsistencies in some of the files that they looked at.
- They also wanted to explore whether care plans where there had been a lengthy involvement were based on a good analysis of the impact of the child's history and experiences.
- Inspectors had noted that some young people had gone on to university from foster care and therefore said they would have wanted to look in more detail at how children leaving children's homes were being supported onto further education.

### *LILAC Assessment*

- 3.11 LILAC (Leading Improvements for Looked After Children) is an organisation led by care experienced young people that assesses the effectiveness of Local Authorities involvement of children and young people in their care. LILAC visited Leeds in February to assess the progress of children's services in involving children and young people in improving their care.
- 3.12 LILAC have developed their own good practice standards for services and are trained to assess the performance of local providers against these LILAC standards. The seven LILAC standards are based on the well-known 'Hear By Right' approach to participation but they have been developed to closely reflect the nature of the Care system. The seven standards are explained below.
- *Shared Values:* The Local Authority or agency adopts shared values that enable children and young people to be actively involved in services that directly affect them, including honesty about what can and cannot be changed and any limitations due to the organisation's responsibilities.
  - *Style of Leadership:* Senior managers and elected members adopt a style of leadership that champions and promotes the involvement of children and young people at all levels of the Local Authority or agency. They demonstrate the need to work in partnership with children and young people.
  - *Structures:* Structures are in place to ensure that children and young people are involved in the planning *and* evaluation of services and that these structures are flexible. They do not rely on the involvement of a small articulate group of children and young people, but take into account different abilities, experiences and skills.
  - *Staff:* Staff are expected to support and contribute to practice and policy on the active involvement of children and young people in services that affect them.

- *Recruitment and Selection*: Children and young people should be involved in the recruitment and selection of all staff and carers who will work with them or be responsible for them.
- *Care Planning and Review*: Children and young people should feel involved in the decision making that affects their lives and all decisions about them should be fully explained. All decision making, planning and review processes should be easily understood.
- *Complaints and Advocacy*: Children and young people should know what to do if they are not happy with the way they are being treated and feel that their complaint will be listened to and treated seriously. Children and young people should have access to an advocate if they wish and the Authority or agency should promote the advocacy service. They should receive feedback on the process and outcome of their complaint and support in coming to terms with the decision.

3.13 The assessment of LILAC is important because the judgement is made by young people who have been in care themselves, and because the findings are based on interviews with children, young people, foster carers and staff. Future OfSTED inspections will similarly base their inspections on interviews with children and carers so success in this assessment gives some more confidence that improvements are making a difference and being recognised by children and carers.

3.14 The final report is not yet complete but initial feedback from LILAC is that Leeds has fully met all seven standards.

3.15 Initial comments from the LILAC team are very positive about the commitment of Leeds to involving children and young people in improving their care and their lives. Comments include:

- “I was happy to see the council realising their role as the parent, often something forgotten about in other LA’s”
- “Overall I was confident Leeds was moving in the correct direction with a lot of progress made ... [we] feel Leeds were deserving of all 7 Standards with some very enthusiastic members of staff which was encouraging”

## **4 Corporate Considerations**

### **4.1 Consultation and Engagement**

4.1.1 Young people were consulted directly as part of the inspection process. Questionnaires were also used to obtain young people’s views.

4.1.2 The LILAC inspection heavily relies on information from young people and care leavers in developing its assessment.

## 4.2 **Equality and Diversity / Cohesion and Integration**

4.2.1 Equality and diversity screening was not required as part of this update report.

## 4.3 **Council policies and City Priorities**

4.3.1 Safely and appropriately reducing the number of children in care is one of the Children's Services obsessions and a key priority for the Council.

## 4.4 **Resources and value for money**

4.4.1 There are no resource implications arising from this report.

## 4.5 **Legal Implications, Access to Information and Call In**

4.5.1 There are no legal implications in accepting this update on recent inspections.

## 4.6 **Risk Management**

4.6.1 No risks have been identified.

## 5 **Conclusions**

5.1 The overall picture these inspections provide is a positive one; of an improving service, which is child focused, innovative and ambitious for its children. Both OfSTED and young people have praised the progress made in the past two years. Where these assessments have identified issues, capacity to improve is strong as these have already been identified by the service and plans are in place to improve.

## 6 **Recommendations**

6.1 The Board is recommended to note this report.

## 7 **Background documents<sup>1</sup>**

7.1 There are no background documents.

---

<sup>1</sup> The background documents listed in this section are available to download from the Council's website, unless they contain confidential or exempt information. The list of background documents does not include published works.

**Report of the Head of Scrutiny and Member Development**

**Report to Scrutiny Board (Children and Families)**

**Date: 25<sup>th</sup> April 2013**

**Subject: Work Schedule**

Are specific electoral Wards affected? If relevant, name(s) of Ward(s):	<input type="checkbox"/> Yes <input checked="" type="checkbox"/> No
Are there implications for equality and diversity and cohesion and integration?	<input type="checkbox"/> Yes <input checked="" type="checkbox"/> No
Is the decision eligible for Call-In?	<input type="checkbox"/> Yes <input checked="" type="checkbox"/> No
Does the report contain confidential or exempt information? If relevant, Access to Information Procedure Rule number: Appendix number:	<input type="checkbox"/> Yes <input checked="" type="checkbox"/> No

**1 Purpose of this report**

1.1 General practice of the Scrutiny Board is to consider the work schedule of the board for the remainder of the municipal year. As this is the last scheduled meeting of the current municipal year attached is the Executive Board minutes for the 13<sup>th</sup> March 2013 for information purposes.

**2. Recommendations**

2.1 Members are asked to:

- a) Note the Executive Board minutes

3. **Background papers<sup>1</sup>** - None used

---

<sup>1</sup> The background documents listed in this section are available to download from the Council's website, unless they contain confidential or exempt information. The list of background documents does not include published works.

This page is intentionally left blank

## EXECUTIVE BOARD

WEDNESDAY, 13TH MARCH, 2013

**PRESENT:** Councillor K Wakefield in the Chair

Councillors J Blake, A Carter, M Dobson,  
S Golton, P Gruen, R Lewis, L Mulherin,  
A Ogilvie and L Yeadon

### 191 Exempt Information - Possible Exclusion of the Press and Public

**RESOLVED** – That, in accordance with Regulation 4 of The Local Authorities (Executive Arrangements) (Meetings and Access to Information) (England) Regulations 2012, the public be excluded from the meeting during consideration of the following parts of the agenda designated as exempt on the grounds that it is likely, in view of the nature of the business to be transacted or the nature of the proceedings, that if members of the public were present there would be disclosure to them of exempt information so designated as follows:-

- (a) Appendix 1 to the report entitled, 'Acquisition of the Engine House, Giotto Tower, Verona Tower and Little Chimney at Tower Works, Globe Road, Holbeck, LS11 5QG', referred to in Minute No. 198 is exempt in accordance with paragraph 10.4(3) of Schedule 12A(3) of the Local Government Act 1972 on the grounds that it contains information relating to the financial or business affairs of any particular person (including the authority holding that information). It is considered that the public interest in maintaining the content of Appendix 1 as exempt outweighs the public interest in disclosing the information. This report relates to a property transaction, which in some cases could be deemed to be highly sensitive where competing parties are involved. In this particular case there are no competing parties, but one item of information in appendix 1 could be considered to be exempt and should be treated as such (and the Homes and Communities Agency (HCA) has requested that it be dealt with in this way). This is that the sum of dowry, if available in the public domain, could have an adverse impact on other transactions which the HCA is proposing.

### 192 Declaration of Disclosable Pecuniary Interests

There were no Disclosable Pecuniary Interests declared to the meeting, however:-

In relation to the item entitled, 'Housing Delivery', Councillor Golton drew the Board's attention to his membership of the Oulton and Woodlesford Neighbourhood Forum, which is involved in the Neighbourhood Plan process. (Minute No. 201 refers).

In relation to the item entitled, 'Local Welfare Scheme', Councillor A Carter drew the Board's attention to the fact that a family member was in receipt of Council Tax Benefit. (Minute No. 211 refers).

**193 Minutes**

**RESOLVED** – That the minutes of the meeting held on the 15<sup>th</sup> February 2013 be approved as a correct record, subject to the replacement of the words 'western route' with 'eastern route' within Minute No. 176, entitled, 'High Speed Rail Phase 2 (HS2) Announcement, 28 January 2013'.

**DEVELOPMENT AND THE ECONOMY**

**194 Kirkgate Market Strategy**

Further to Minute No. 42, 27<sup>th</sup> July 2011, the Director of City Development submitted a report setting out proposals for the redevelopment and refurbishment of Kirkgate Market, whilst also providing information on the short and longer term management arrangements for the Market.

With regard to proposals around the future management structure of the market, Members discussed the options for a future management model, considering the potential role which could be played by the traders. In conclusion, it was undertaken that a further report would be submitted to the Board in due course, in order to enable Members to consider this matter in more detail.

A Member reported the concerns that some traders had relayed to him in respect of how their leases may be affected by the proposals, and requested that contact was made with those traders in order to address such concerns.

**RESOLVED –**

- (a) That in principle agreement be given to the proposed improvements to the interior of the Market, as summarised within paragraph 5.1 of the submitted report, in order that the project can be progressed and a detailed planning application submitted (completion of RIBA Work Stage D – Design Development), and also to enable the introduction of the scheme into the Capital Programme.
- (b) That in principle agreement be given to progress the improvements to George Street, as outlined within paragraph 5.2 of the submitted report, as a separate project (approval from Executive Board will be sought subsequently to introduce this as a separate scheme into the Capital Programme).
- (c) That agreement be given to continue to hypothecate future years markets surplus, as detailed within the submitted report, in order to fund prudential borrowing, which in turn will fund the capital costs of the redevelopment and refurbishment proposals.
- (d) That in principle agreement be given to putting in place an alternative management structure within Leeds City Council, with a further report



being submitted to the Board in due course, in order to enable the Board to determine detailed proposals.

- (e) That approval be given to an injection of £1,615,000 into the Capital Programme and approval also be given to the incurring of expenditure of £1,615,000 for the first phase of backlog maintenance and upgrade works in the Market, to progress the scheme design proposals to RIBA Stage D for the proposed redevelopment and refurbishment of the Market and also for the developer procurement competition for the George Street frontage.

**195 Submission of the Transport and Works Act Order Application for the New Generation Transport (NGT) Scheme**

Further to Minute No. 93, 17<sup>th</sup> October 2012, the Director of City Development submitted a report which sought approval for the submission of the Transport and Works Act Order (TWAO) application and associated Planning and Highway applications for the New Generation Transport (NGT) Scheme. In addition, the report sought approval for the necessary authority to spend £19,200,000 from within the existing Capital Programme in order to meet the Council's share in the development costs to progress the scheme to the start of the construction phase. Finally, the report also sought authority for the Council to enter into a Joint Venture Agreement (JVA) with Metro for the development of NGT and also for the Director of City Development to be provided with the necessary authority enabling him to finalise the detail of the JVA.

The Board noted the proposals in place to undertake a range of further consultation exercises, together with the legislative procedures which needed to be concluded.

Responding to requests that all affected communities needed to have the opportunity to engage in clear and meaningful consultation on this issue, assurances were given that such opportunities would continue to be provided, with the Executive Member for Development and the Economy and the Chair of the West Yorkshire Integrated Transport Authority offering to discuss related matters with community groups as appropriate.

A Member highlighted the need to ensure that the project's business model continued to be reviewed in light of any demographic changes that continued to occur across the city.

With regard to future consultation exercises scheduled for Belle Isle, a request was made that such consultation covered a wider geographical area than just the Belle Isle community.

**RESOLVED –**

- (a) That the contents of the submitted report be noted.
- (b) That approval be given for a report to be presented to Full Council recommending the submission of the required Transport and Works

Act Order (TWAO) and associated applications for NGT to the Secretary of State for Transport.

- (c) That expenditure of £19,200,000 from within the existing Capital Programme to meet the Council's share in the development costs to progress the scheme to the start of the construction phase be approved, subject to the Director of City Development and the Director of Resources receiving regular updates in relation to proposed expenditure throughout the development phase.
- (d) That approval be given for the Council to enter into a JVA with Metro for the development of NGT, and that the necessary authority be delegated to the Director of City Development in order to enable him to finalise the detail of the JVA in accordance with the Heads of Terms. In addition, and subject to the Council approving the submission of the TWAO, the necessary authority also be delegated to the Director of City Development in order to allow him to take all such steps as may be necessary or expedient to carry the Resolution into effect (including all those steps required for the Council to apply for and thereafter to promote the Order).

## **ENVIRONMENT**

### **196 Deputation to Council - Leeds Children's Mayor regarding the Winning Manifesto: "Leeds Offers Fun, Free Fitness for the Family"**

The Director of Environment and Neighbourhoods submitted a report setting out the Council's response to the deputation presented to full Council on 16<sup>th</sup> January 2013 in respect of the winning Manifesto from the Leeds Children's Mayor entitled, "Leeds Offers Fun, Free Fitness for the Family".

The Board paid tribute to Oliver Larking, Leeds Children's Mayor, for the proposals which made up his winning manifesto and for the enthusiastic and confident way in which he had delivered his deputation speech to the Council meeting.

Members highlighted the potential role of Ward Councillors in helping to deliver the proposals via the use of Section 106 contributions, whilst the Board welcomed the way in which the proposals cut across both the environmental and also the health and wellbeing agendas.

### **RESOLVED –**

- (a) That the contents of the submitted report be noted.
- (b) That the following actions be approved:-
- To include reference to health and fitness when carrying out consultation on relevant schemes; and
  - To promote the inclusion of outdoor fitness equipment as an important means to encourage people to enjoy the outdoor environment and get fit at the same time.

- (c) That a letter be forwarded to Oliver, thanking him for all of his efforts in respect of his winning manifesto and deputation to Council, whilst also advising him of the outcomes arising from the Council's response.

**197 Tackling Fuel Poverty and Reducing CO2 Emissions: Home Energy Conservation Act Further Report 2013**

The Director of Environment and Neighbourhoods submitted a report providing an update on the new Home Energy Conservation Act (HECA) requirements and also presenting the content of the Leeds City Council 'Further Report 2013' for approval, prior to its formal submission to the Secretary of State for Energy and Climate Change.

Members welcomed the positive work which continued to be undertaken in this area.

**RESOLVED –**

- (a) That the contents of the submitted report and the associated appendices be approved, with approval also being given for the relevant documents being published on the Council's website as the 'Leeds City Council Home Energy Conservation Act Further Report'.
- (b) That contracts be awarded to the 3 highest scoring bidders (assessed using a 50/50 price/quality split) to manage and deliver the interim Green Deal framework project.
- (c) That approval be given for £20,000 of the existing 'Wrap Up Leeds' budget being transferred from 2012-13 to 2013-14, in order to support the Green Deal framework.
- (d) That the necessary authority be delegated to the Director of Environment and Neighbourhoods which will enable him to take operational decisions to ensure that the Green Deal framework operates effectively.

**DEVELOPMENT AND THE ECONOMY**

**198 Acquisition of the Engine House, Giotto Tower, Verona Tower and Little Chimney at Tower Works, Globe Road, Holbeck LS11 5QG**

The Director of City Development submitted a report advising of a request received from the Homes and Communities Agency (HCA) that the Council accepted the transfer of four Listed Buildings into its ownership at Tower Works, Globe Road, Holbeck. The transfer of the buildings would be accompanied by a financial dowry funded by the Department of Communities and Local Government (DCLG) and would result in the Council and the HCA working in partnership to bring forward the redevelopment of the Tower Works and the wider Holbeck Urban Village. In addition, the report detailed the reasons and terms for the transfer and recommended that the Council accepted the freehold transfer of the buildings, and how the buildings should be managed in the future.

Following consideration of Appendix 1 to the submitted report, designated as exempt under the provisions of Access to Information Procedure Rule 10.4(3), which was considered in private at the conclusion of the meeting, it was

**RESOLVED –**

- (a) That approval be given for the Council to accept the freehold transfer of ownership from the HCA of buildings known as the Engine House, Giotto Tower, Verona Tower and Little Chimney at Tower Works, Globe Road, Holbeck, subject to the financial dowry offered by the HCA being of a sufficient sum and no less than the amount identified in exempt Appendix 1 to the submitted report.
- (b) That approval be given to the principle of the Giotto Tower, Verona Tower and Little Chimney being placed within a trust, established to maintain the buildings in perpetuity, with the Council acting as full trustee.
- (c) That in the context of paragraphs 6.1 and 6.2 of the submitted report, in the event that any matters require formal approval between Executive Board approval of the transaction and completion, then authority be given for these matters to be dealt with by the Director of City Development under the appropriate scheme of delegation, with the concurrence of the Executive Member for Development and the Economy and the Director of Resources.

(The matters referred to within this minute were not eligible for Call In as the HCA had requested that the buildings be transferred to the Council by the end of the 2012/13 financial year, this being 28th March 2013. The HCA had imposed this deadline as the dowry available from DCLG to accompany the transfer was only available until the end of the financial year. In the event of such decisions being Called In, then it would not be possible to meet the HCA deadline and the dowry would be lost. Therefore, this matter was deemed urgent, on the basis that any delay would seriously damage the Council's, or the public's interests).

**NEIGHBOURHOODS, PLANNING AND SUPPORT SERVICES**

**199 Police Community Safety Officers (PCSOs) Service Level Agreement 2013/14**

The Director of Environment and Neighbourhoods submitted a report which sought authority to enter into a Service Level Agreement (SLA) with the Office of the West Yorkshire Police and Crime Commissioner (OPCC) for 2013/14, and for this to be extended annually thereafter up to 31st March 2016, subject to Council budgets and an ongoing commitment from the OPCC to sustain current PCSO levels and local partnership arrangements.

Responding to a Member's enquiry, officers provided the Board with an update on the actions being taken to identify and tackle environmental crime.

**RESOLVED –**

- (a) That expenditure of up to £1,514,000 in 2013/14 be approved, in order to provide a 30% contribution towards the costs of 165 PCSO's (5 per Ward) across the city, by means of a Service Level Agreement (SLA) with the Office of the West Yorkshire Police and Crime Commissioner (OPCC).
- (b) That approval be given for this arrangement to be rolled forward on an annual basis for up to three years (to 31<sup>st</sup> March 2016), subject to annual Council budget approval and an ongoing commitment from the West Yorkshire Police and Crime Commissioner to maintain current PCSO levels and to continue to develop local partnership working.
- (a) That in moving forward, approval be given for an annual inflation increase being included as part of the budget setting process (budgets permitting) in order to maintain PCSO numbers.

**200 Leeds Local Development Framework: Authority Monitoring Report 2012**

Further to Minute No. 155, 14<sup>th</sup> December 2011, the Director of City Development submitted a report presenting for approval and for the purposes of publication on the Council's website, the 2012 Leeds Local Development Framework Authority Monitoring Report, pursuant to Regulation 34 of the Town and Country Planning (Local Planning) (England) Regulations 2012.

Members welcomed the robustness of the report and the fact that the Strategic Housing Land Availability Assessment (SHLAA) Partnership was to include a wider political representation.

**RESOLVED –** That the 2012 Leeds Local Development Framework Authority Monitoring Report, as appended to the submitted report, be approved for the purposes of publication on the Council's website, pursuant to Regulation 34 of the Town and Country Planning (Local Planning) (England) Regulations 2012.

**201 Housing Delivery**

The Director of City Development submitted a report setting out proposals on how Leeds would improve its housing offer in terms of broadening its supply of land and promoting housing delivery. Within this overall context and in noting the conclusions drawn from the Authority Monitoring Report (AMR) 2012, the submitted report explored how Leeds' housing land portfolio and housing delivery could be enhanced, which included the establishment of criteria for the potential release of some Protected Area of Search (PAS) sites for development.

As part of the introduction to the report, the Executive Member for Neighbourhoods, Planning and Support Services emphasised the Council's commitment to ensuring the successful delivery of housing provision in Leeds, but in addition, provided assurances that the status of some PAS sites would be protected.

Following this, the Executive Member for Neighbourhoods, Planning and Support Services proposed the introduction of an addition to the policy criteria detailed within the submitted report, namely that when permission was granted to develop PAS sites, such permission be for a duration of 2 years, rather than the current 5 years, in order to avoid landbanking.

Further to the proposal above, a request was made for a second addition to be incorporated into the policy criteria, specifically, the insertion of a clause which would enable the Council to refuse permission to develop PAS sites for 'any other material planning reasons', in order to protect the interests of the Council and others.

Having considered the respective proposals to amend the policy criteria as detailed within the submitted report, it was

**RESOLVED** – That the policy criteria for the potential release of PAS sites, as detailed within paragraph 3.3 of the submitted report, be approved, subject to the inclusion of criteria which:

- (i) reduces from 5 years to 2 years the period by which any permission granted to develop PAS sites remains valid; and
- (ii) enables the Council to refuse permission to develop PAS sites for 'any other material planning reasons'.

(Under the provisions of Council Procedure Rule 16.5, Councillors A Carter and Golton required it to be recorded that they both abstained from voting on the decisions referred to within this minute)

## **202 Proposal to Modernise Cottingley Springs**

Further to Minute No. 69, 5<sup>th</sup> September 2012, the Director of Environment and Neighbourhoods submitted a report which sought approval to inject £1,116,000 into the Council's Capital Programme for the purposes of refurbishing Cottingley Springs, whilst the report also sought authority to spend the £1,116,000 sum, in order to progress the capital scheme.

**RESOLVED** –

- (a) That approval be given for the injection of this scheme, totalling £1,116,000, into the Capital Programme, to be funded from £890,000 of Homes and Communities Agency (HCA) grant, and £226,000 from prudential borrowing.
- (b) That authority to spend the £1,116,000 sum be approved, in order to progress the scheme detailed within the submitted report.

(The matters referred to within this minute were not eligible for Call In, because if such decisions were open for Call In and were subsequently Called In, then this would put at risk the timescales set by the HCA to start on site by 25th March 2013. The Call In process could not be concluded in time for the deadline and therefore the grant funding would be at risk. Therefore, this matter was deemed urgent, on the basis that any delay would seriously damage the Council's, or the public's interests).

## **CHILDREN'S SERVICES**

### **203 Outcome of Annual consultation on school admissions arrangements for September 2014**

The Director of Children's Services submitted a report which sought approval of the Local Authority School Admissions Policy and co-ordinated arrangements for September 2014, together with the arrangements for in-year applications.

The Executive Member for Children's Services highlighted the intention to undertake further work in order to ensure that better support was provided to young carers throughout the city.

**RESOLVED** – That the Local Authority Admissions Policy and co-ordinated arrangements for September 2014, together with the arrangements for in-year applications, be approved. Specifically:-

- (i) Approval be given to the clarifications around medical priority and infant and junior sibling links;
- (ii) Approval be given to the admissions arrangements for in-year applications, including the delegation of the power to convey offers and refusals to community and voluntary controlled schools with effect from September 2013;
- (iii) It be noted that further work will be undertaken to determine appropriate wording and definitions to provide better support for young carers in obtaining a place at an accessible school.

### **204 Update on Children's Services' Obsessions - Reducing the need for Children to be looked after (Help Children to live in safe and supportive families)**

The Director of Children's Services submitted a report providing an update on the Children's Trust obsession to safely and appropriately reduce the need for children and young people to be in care. In addition, the report also provided an update and analysis upon the number of looked after children in the care of the Council, whilst outlining the progress made on the actions taken by Children's Services, with support from key partners, to safely and appropriately reduce the number of looked after children in Leeds.

The Executive Member for Children's Services highlighted the positive outcomes which were being achieved as a result of the work undertaken to recruit foster carers in the city. In addition, the Board noted that the Council had recently met all 7 of the Leading Improvements for Looked After Children (LILAC) standards.

Responding to a Member's comments regarding the Council's allowances framework for foster carers, officers undertook to provide the Member in question with further detail on this issue.

**RESOLVED** – That the approach outlined within the submitted report be endorsed, and that the progress made to safely and appropriately reduce the number of looked after children in Leeds be noted.

**205 Proposal to Change the Status of Bramley CE (VC) Primary School from Voluntary Controlled to Voluntary Aided**

The Director of Children's Services submitted a report which sought approval of the proposals published by the Governing Body of Bramley St. Peter's Church of England (VC) Primary School to change the school's status from Voluntary Controlled to Voluntary Aided.

**RESOLVED** – That the proposal published by the Governing Body of Bramley St. Peter's Church of England Primary School to change the school's status from Voluntary Controlled to Voluntary Aided, with an implementation date of 15th April 2013, be approved.

**206 Investing in Young People: Future Direction for Youth Services in Leeds**

The Director of Children's Services and the Director of City Development submitted a joint report proposing a fundamental redesign of youth provision in Leeds that affirmed the continuing key role of the youth service, strengthened the role of Area Committees and clusters, pulled together existing services through a co-ordinated approach and enabled the enhancement of universal, targeted and specialist youth services. In addition, the report sought approval for the proposed direction enabling the necessary restructuring to take place during 2013.

Members welcomed the proposals detailed within the report, specifically the continued role which could be played by the Breeze brand, the co-ordinated offer being proposed, the ringfencing of the budget proposed to be allocated to Area Committees and the involvement of young people in the associated decision making processes.

The Executive Member for Children's Services emphasised the active role intended to be played by Scrutiny Board (Children and Families) in monitoring the implementation of the changes to youth service provision.

**RESOLVED –**

- (a) That the comprehensive consultation and assessment work undertaken to develop a new vision for the 'youth offer' in Leeds be noted, and that the continuing commitment to youth services as a key strand of the child friendly Leeds ambitions be endorsed.
- (b) That the new 'youth offer', as outlined within the submitted report be approved, bringing together a more co-ordinated approach to universal services, improved targeted and specialist provision, through an enhanced role for Area Committees and clusters and a stronger use of the Breeze brand.



- (c) That the Director of Children's Services and the Director of City Development be delegated responsibility, in consultation with the relevant Executive Board Members, to implement the remodelling of Council run youth services and those provided by key partners, in order to deliver the new approach, with full staff and Union engagement also being ensured throughout this process.
- (d) That the proposal for discussions between the Executive Member for Children's Services and Area Committees about how to best enable the expenditure of £2,540,000 on targeted youth work across local areas in Leeds, be endorsed.
- (e) That a new allocation to the overall Area Committee budget of £250,000 in 2013/14 and £500,000 in 2014/15 be approved, which will be ringfenced for youth activities, with a clear expectation that young people will help to shape the decision making around the spending of this resource, against an agreed set of outcomes.

### **LEISURE AND SKILLS**

#### **207 Inspiring a Generation - A Sporting Legacy for Leeds: Progress Report**

Further to Minute No. 70, 5<sup>th</sup> September 2012, the Director of City Development and the Director of Children's Services submitted a joint report outlining the progress which had been made in relation to the proposals for a sporting legacy for Leeds, building upon the successes of the London 2012 Olympic and Paralympic Games which were outlined within the report entitled, "Inspire a Generation", presented to Executive Board shortly after the conclusion of the 2012 Games.

Responding to a Member's enquiry, the Board noted the work which was being undertaken with cycling organisations as part of the initiative. In addition, the Board noted the intention for a report to be submitted to the April 2013 meeting with regard to the 'Leeds Let's Get Active' programme.

#### **RESOLVED –**

- (a) That the contents of the submitted report be noted.
- (b) That the progress made within this field, as outlined within the submitted report, be noted.
- (c) That the principles for the allocation of grant funding for the "Inspire a Generation Legacy Fund" be approved.
- (d) That the extended rate relief proposals, as set out within Table 1 of the submitted report, be approved.
- (e) That the proposals for the 'Leeds Let's Get Active' initiative be noted and that a further report on this matter be submitted to the Board in April 2013.

- (f) That officers be requested to further explore the benefits of holding a focussed 'Sport and Business Summit', linking in to the 'Best City' initiative and the build up to the Tour de France Grand Depart in 2014.

## **ADULT SOCIAL CARE**

### **208 Healthwatch Leeds**

The Director of Adult Social Services, the Director of Children's Services and the Director of Public Health submitted a joint report providing information on the outcome of the Local Authority's procurement exercise to commission a local Healthwatch organisation and an NHS Complaints Advocacy service for Leeds. In addition, the report provided details of the progress made to date to develop local Healthwatch in Leeds, including the implementation of its key functions, roles and responsibilities in preparation for 1<sup>st</sup> April 2013. Finally, the report also provided assurances in respect of the development of the role of Healthwatch in conjunction with Scrutiny and the Health and Wellbeing Board.

The Executive Member for Adult Social Care paid tribute to the work which had been undertaken by all those involved in the Leeds Local Involvement Network (LINK).

In considering the report, a request was made that representatives from Healthwatch Leeds were periodically invited to attend future Executive Board meetings, as and when appropriate.

### **RESOLVED –**

- (a) That the contents of the submitted report be noted.
- (b) That the plans to develop the role of Healthwatch Leeds with specific reference to working with Scrutiny Boards (Health and Wellbeing and Adult Social Care) and (Children and Families), and the Health and Wellbeing Board, as recommended in the report to Scrutiny Board (Health and Wellbeing and Adult Social Care) on the 20<sup>th</sup> February 2013, be noted.

## **HEALTH AND WELLBEING**

### **209 The Transfer of Public Health from the Primary Care Trust to Leeds City Council**

The Director of Resources submitted a report providing an update on the transfer of public health functions, resources, assets and liabilities to the Council under the statutory process, as set out within the Health and Social Care Act 2012. In addition, the report sought approval to delegate decision making to the Chief Executive in respect of the approval of the final agreed list of resources, assets and liabilities transferring to the Council under the Health and Social Care Act 2012.

**RESOLVED –**

- (a) That the contents of the submitted report, together with the functions, budget, resources and assets and liabilities due to transfer on 1<sup>st</sup> April 2013 be noted.
- (b) That the relevant decision making authority be delegated to the Chief Executive, in order to enable him to approve:-
  - (i) the Transfer Scheme relating to staff; and
  - (ii) the Transfer Scheme relating to assets and liabilities.
- (c) That it be noted that the Council will award new contracts for existing services where they expire prior to 31<sup>st</sup> March 2013, which will be approved under the Officer Delegation Scheme.

**RESOURCES AND CORPORATE FUNCTIONS**

**210 Financial Health Monitoring 2012/2013 - Month 10 Report**

The Director of Resources submitted a report setting out the Council's projected financial health position for 2012/13 after ten months of the financial year.

**RESOLVED** - That the projected financial position of the authority after ten months of the financial year, be noted.

**211 Local Welfare Scheme**

Further to Minute No. 106, 17<sup>th</sup> November 2012, the Director of Resources submitted a report providing an update on the outcome of the consultation undertaken and the progress made towards establishing administrative arrangements to support a Local Welfare Scheme to provide support for families and vulnerable people faced with unforeseen difficulties or emergency situations. In addition, the report sought approval for a number of initiatives to be developed that were aimed at creating greater sustainability and increasing advice and support, with such initiatives to be funded from within the overall devolved funding for local schemes.

Responding to a Member's enquiry, the Board was provided with information around the expected provision of Food Banks across the city, and the potential role that the Council could play in respect of such provision alongside key partners.

In considering the submitted report, the Chair requested that the Board be provided with an evaluation of the scheme's performance at the appropriate time, once it was operational.

**RESOLVED –**

- (a) That the local welfare scheme, as set out within Appendix 1 to the submitted report, be approved.

- (b) That the development of initiatives, as set out within paragraph 3.15 of the submitted report, along with the earmarking of funds from the devolved funding to support the initiatives, be approved.
- (c) That a short pilot scheme which would see applicants referred for advice and support where this was felt beneficial, be approved.
- (d) That the necessary authority be delegated to the Director of Resources in order to enable him to:-
  - (i) Vary the earmarked funding based on data provided from the first 3 months operation of the local welfare scheme; and
  - (ii) Allocate funding to approved initiatives with a requirement that Executive Board receives reports evaluating the progress and outcomes from funded initiatives.

**212 Regional Economic Intelligence Unit - Evaluation of Transfer**

Further to Minute No. 261, 16<sup>th</sup> May 2012, the Assistant Chief Executive (Customer Access and Performance) submitted a report providing an update on the evaluation of the sustainable operational performance of the Regional Economic Intelligence Unit (REIU) in the eighteen month trading period following the formal transfer of the function from Yorkshire Forward to Leeds City Council on 1st November 2011. Specifically, the report provided an update on: the full year (2012/2013) funding position and revenue profile of the unit; the forecast 2013/2014 revenue profile of the unit, the contribution of the team to work across the Council; and, the future opportunities for developing the team's contribution further.

Responding to a Member's enquiry, the Board was provided with clarification around the Unit's initial eighteen month trading account, the sources of the work which had been undertaken by the Unit and how the Unit's resource would be determined by the future demand for its services.

In conclusion, it was requested that a further update report be provided to the Board evaluating the Unit's performance at the 6 month point of the financial year.

**RESOLVED –**

- (a) That the positive outcome which the REIU has delivered in balancing its revenue budget and delivering a small trading surplus be noted.
- (b) That the trading model which underpins the sustainability of the REIU's work, be noted.
- (c) That the Board notes and approves the arrangements in place to ensure that ongoing monitoring of the REIU will be undertaken via the Council's normal budget monitoring arrangements.
- (d) That a further update report be provided to the Board evaluating the Unit's performance at the 6 month point of the financial year.

**DATE OF PUBLICATION:** 15<sup>TH</sup> MARCH 2013

**LAST DATE FOR CALL IN  
OF ELIGIBLE DECISIONS:** 22<sup>ND</sup> MARCH 2013 (5.00 P.M.)

(Scrutiny Support will notify Directors of any items called in by 12.00 p.m. on 25<sup>th</sup> March 2013)

This page is intentionally left blank